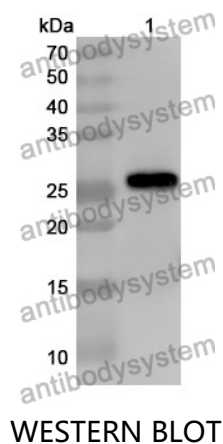


Anti-CD66f/PSG1 Polyclonal Antibody

Summary

Catalog No.	PHC88601
Host species	Rabbit
Tested applications	ELISA: 1:4000-1:8000, IHC: 1:50-1:100, WB: 1:1000-1:4000
Species reactivity	Human
Immunogen	E. coli - derived recombinant Human CD66f/PSG1 (Leu202-Thr401).
Form	Liquid
Storage buffer	0.01M PBS, pH 7.4, 50% Glycerol, 0.05% Proclin 300.
Clonality	Polyclonal
Isotype	IgG
Applications	ELISA, IHC, WB
Target	Pregnancy-specific glycoprotein 1,PSBG-1,Fetal liver non-specific cross-reactive antigen 1/2,B1G1,PSG1,PSGGA,PSG95,Pregnancy-specific beta-1 glycoprotein C/D,CD66 antigen-like family member F,PS-beta-C/D,CD66f,PS-beta-G-1,Pregnancy-specific beta-1-glycoprotein 1,FL-NCA-1/2,PSBG1
Purification	Purified by antigen affinity column.
Accession	P11464
Stability and Storage	Use a manual defrost freezer and avoid repeated freeze thaw cycles. Store at 2 to 8°C for frequent use. Store at -20 to -80°C for twelve months from the date of receipt.
Note	For research use only.

Data Image



Recombinant Protein lysates were subjected to SDS PAGE followed by western blot with CD66f/PSG1 antibody (PHC88601) at 1 μ g/ml.

Lane 1: Recombinant protein

Second Ab: Goat Anti-Rabbit IgG H&L Polyclonal antibody, HRP (PTB96431) at 0.1 μ g/mL.

Predict MW: 25 kDa

Observed MW: 25 kDa