

Anti-IL8/CXCL8 Polyclonal Antibody

Summary

Catalog No.	PHC79101
Host species	Rabbit
Tested applications	ELISA: 1:4000-1:8000, IHC: 1:50-1:100, WB: 1:1000-1:4000
Species reactivity	Human
Immunogen	E. coli - derived recombinant Human IL8/CXCL8 (Ala23-Ser99).
Form	Liquid
Storage buffer	0.01M PBS, pH 7.4, 50% Glycerol, 0.05% Proclin 300.
Clonality	Polyclonal
Isotype	IgG
Applications	ELISA, IHC, WB
Target	GCP/IL-8 protein II,MDNCF,IL8/NAP1 form III,IL-8(1-77),Neutrophil-activating factor,GCP/IL-8 protein I,GCP/IL-8 protein VI,Interleukin-8,Chemokine (C-X-C motif) ligand 8,Neutrophil-activating protein 1,Monocyte-derived neutrophil chemotactic factor,(Ser-IL-8)72,MDNCF-b,LYNAP,GCP/IL-8 protein V,IL8/NAP1 form IV,MONAP,IL8/NAP1 form V,IL8/NAP1 form VI,NAP-1,Granulocyte chemotactic protein 1,GCP/IL-8 protein III,IL8/NAP1 form II,IL8,IL-8,CXCL8,IL8/NAP1 form I,(Ala-IL-8)77,Protein 3-10C,GCP/IL-8 protein IV,Emoctakin,GCP-1,C-X-C motif chemokine 8,NAF,T-cell chemotactic factor,MDNCF-c,Monocyte-derived neutrophil-activating peptide,Lymphocyte-derived neutrophil-activating factor
Purification	Purified by antigen affinity column.

Recombinant Proteins & Antibodies

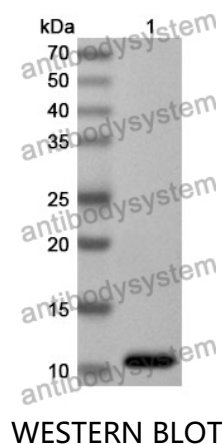
Accession P10145**Stability and Storage**

Use a manual defrost freezer and avoid repeated freeze thaw cycles. Store at 2 to 8°C for frequent use. Store at -20 to -80°C for twelve months from the date of receipt.

Note

For research use only.

Data Image



Recombinant Protein lysates were subjected to SDS PAGE followed by western blot with IL8/CXCL8 antibody (PHC79101) at 1 µg/ml.

Lane 1: Recombinant protein

Second Ab: Goat Anti-Rabbit IgG H&L Polyclonal antibody, HRP (PTB96431) at 0.1 µg/mL.

Predict MW: 11 kDa

Observed MW: 11 kDa