

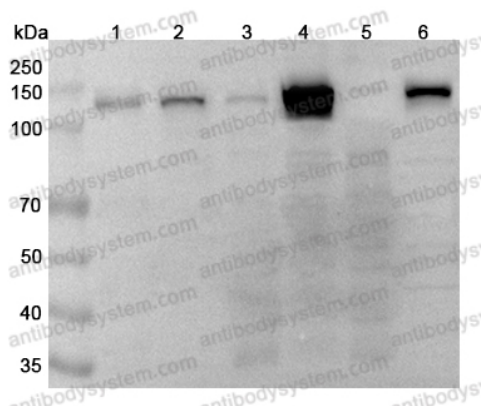
# Anti-PARP1 Polyclonal Antibody

## Summary

---

<b>Catalog No.</b>	PHC43701
<b>Host species</b>	Rabbit
<b>Tested applications</b>	ELISA: 1:4000-1:8000, IHC: 1:50-1:200, WB: 1:1000-1:4000
<b>Species reactivity</b>	Human, Mouse, Rat
<b>Immunogen</b>	E. coli - derived recombinant Human PARP1 (Thr373-Glu540).
<b>Form</b>	Liquid
<b>Storage buffer</b>	0.01M PBS, pH 7.4, 50% Glycerol, 0.05% Proclin 300.
<b>Concentration</b>	1.4 mg/ml
<b>Clonality</b>	Polyclonal
<b>Isotype</b>	IgG
<b>Applications</b>	ELISA, IHC, WB
<b>Target</b>	PARP-1, Protein poly-ADP-ribosyltransferase PARP1, DNA ADP-ribosyltransferase PARP1, Poly [ADP-ribose] polymerase 1, PPOL, Poly[ADP-ribose] synthase 1, ADPRT 1, ADP-ribosyltransferase diphtheria toxin-like 1, ADPRT, PARP1, NAD(+) ADP-ribosyltransferase 1, ARTD1
<b>Purification</b>	Purified by antigen affinity column.
<b>Accession</b>	P09874
<b>Stability and Storage</b>	Use a manual defrost freezer and avoid repeated freeze thaw cycles. Store at 2 to 8°C for frequent use. Store at -20 to -80°C for twelve months from the date of receipt.
<b>Note</b>	For research use only.

## Data Image



Western Blot

Various lysates were subjected to SDS PAGE followed by western blot with PARP1 antibody (PHC43701) at 1 $\mu$ g/ml.

Lane 1: Jurkat cell lysate

Lane 2: Hela cell lysate

Lane 3: HepG2 cell lysate

Lane 4: 293T cell lysate

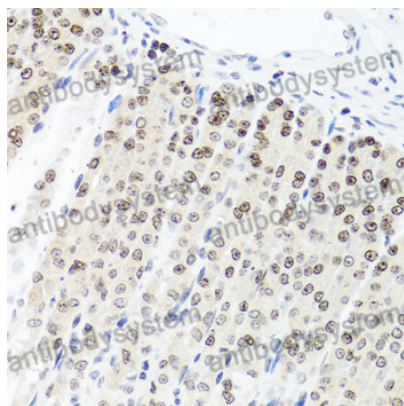
Lane 5: A549 cell lysate

Lane 6: K562 cell lysate

Second Ab: Goat Anti-Rabbit IgG H&L Polyclonal antibody, HRP (PTB96431) at 0.1  $\mu$ g/mL.

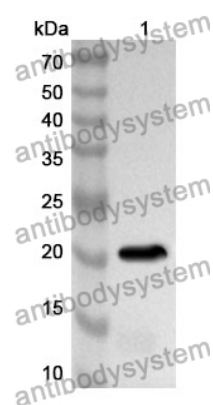
Predict MW: 113 kDa

Observed MW: 113 kDa



Immunohistochemical

Immunohistochemical analysis of mouse stomach stained for PARP1 with PHC43701.



Western Blot

Recombinant Protein lysates were subjected to SDS PAGE followed by western blot with PARP1 antibody (PHC43701) at 1  $\mu$ g/ml.

Lane 1: Recombinant Protein

Second Ab: Goat Anti-Rabbit IgG H&L Polyclonal antibody, HRP (PTB96431) at 0.1  $\mu$ g/mL.

Predict MW: 20 kDa

Observed MW: 20 kDa