

Anti-ATP6AP2 Polyclonal Antibody

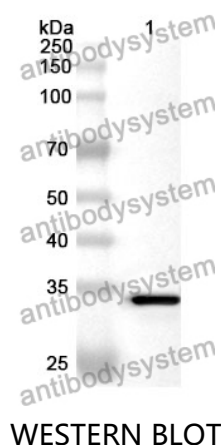
Summary

Catalog No.	PHB30701
Host species	Rabbit
Tested applications	ELISA: 1:4000-1:8000, IHC: 1:50-1:100, WB: 1:1000-1:4000
Species reactivity	Human, Mouse, Rat
Immunogen	E. coli - derived recombinant Human ATP6AP2 (Asn17-Glu302).
Form	Liquid
Storage buffer	0.01M PBS, pH 7.4, 50% Glycerol, 0.05% Proclin 300.
Clonality	Polyclonal
Isotype	IgG
Applications	ELISA, IHC, WB
Target	Renin/prorenin receptor,ER-localized type I transmembrane adapter,ATPase H(+)-transporting lysosomal accessory protein 2,CAPER,ATP6M8-9,Embryonic liver differentiation factor 10,ATP6AP2,ATPase H(+)-transporting lysosomal-interacting protein 2,V-ATPase M8.9 subunit,ATP6IP2,Renin receptor,N14F,ELDF10,Vacuolar ATP synthase membrane sector-associated protein M8-9
Purification	Purified by antigen affinity column.
Accession	O75787
Stability and Storage	Use a manual defrost freezer and avoid repeated freeze thaw cycles. Store at 2 to 8°C for frequent use. Store at -20 to -80°C for twelve months from the date of receipt.

Note

For research use only.

Data Image



Recombinant Protein lysates were subjected to SDS PAGE followed by western blot with ATP6AP2 antibody (PHB30701) at 1 µg/ml.

Lane 1: Recombinant protein

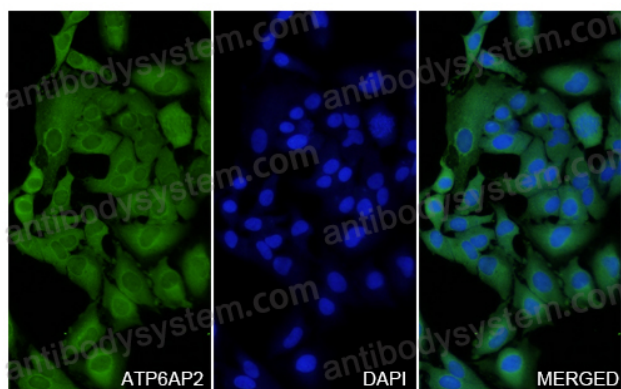
Second Ab: Goat Anti-Rabbit IgG H&L Polyclonal antibody, HRP (PTB96431) at 0.1 µg/mL.

Predict MW: 34 kDa

Observed MW: 34 kDa

ATP6AP2 in Hela Cell Line.

The Hela cells were fixed with 4% paraformaldehyde (20 min), and then blocked with 5% goat serum for 1h. And the cells were incubated for 2h at 37°C with ATP6AP2 (PHB30701) at 12.2 µg/ml. The section was then incubated with Goat Anti-Rabbit IgG (Alexa Fluor-488) preabsorbed at 1/100 dilution (Shown in green) for 1 hour at room temperature. Nuclear DNA was labelled with DAPI (shown in blue).



Immunocytochemistry/ Immunofluorescence