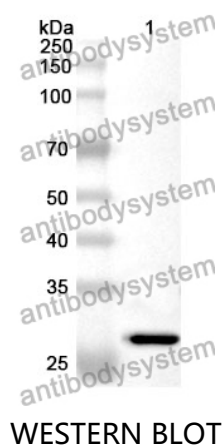


Anti-CTDSPL Polyclonal Antibody

Summary

| | |
|------------------------------|--|
| Catalog No. | PHA44401 |
| Host species | Rabbit |
| Tested applications | ELISA: 1:4000-1:8000, IHC: 1:50-1:100, WB: 1:1000-1:4000 |
| Species reactivity | Human, Mouse |
| Immunogen | E. coli - derived recombinant Human CTDSPL (Pro13-Val236). |
| Form | Liquid |
| Storage buffer | 0.01M PBS, pH 7.4, 50% Glycerol, 0.05% Proclin 300. |
| Clonality | Polyclonal |
| Isotype | IgG |
| Applications | ELISA, IHC, WB |
| Target | hYA22,CTD small phosphatase-like protein,YA22,NIFL,NLI-interacting factor 1,RBSP3,SCP3,Small CTD phosphatase 3,CTDSP-like,Nuclear LIM interactor-interacting factor 1,Protein YA22,NIF-like protein,Carboxy-terminal domain RNA polymerase II polypeptide A small phosphatase 3,C3orf8,NIF1,CTDSPL,Small C-terminal domain phosphatase 3 |
| Purification | Purified by antigen affinity column. |
| Accession | O15194 |
| Stability and Storage | Use a manual defrost freezer and avoid repeated freeze thaw cycles. Store at 2 to 8°C for frequent use. Store at -20 to -80°C for twelve months from the date of receipt. |
| Note | For research use only. |

Data Image



Recombinant Protein lysates were subjected to SDS PAGE followed by western blot with CTDSPL antibody (PHA44401) at 1 µg/ml.

Lane 1: Recombinant protein

Second Ab: Goat Anti-Rabbit IgG H&L Polyclonal antibody, HRP (PTB96431) at 0.1 µg/mL.

Predict MW: 27 kDa

Observed MW: 27 kDa