

Research Grade Eptinezumab

Summary

| | |
|---------------------------|--|
| Catalog No. | DHC22403 |
| Alternative Names | ALD-403, CAS: 1644539-04-7 |
| Clone ID | Eptinezumab |
| Host species | Humanized |
| Species reactivity | Human |
| Form | Liquid |
| Storage buffer | 0.01M PBS, pH 7.4. |
| Concentration | 1 mg/ml |
| Purity | >95% as determined by SDS-PAGE. |
| Clonality | Monoclonal |
| Isotype | IgG1-kappa |
| Applications | Research Grade Biosimilar |
| Target | CCP, PDN-21, CALCA, Calcitonin carboxyl-terminal peptide, Calcitonin, CALC1, Calcitonin gene-related peptide II, CALCB, Calcitonin gene-related peptide 2, Beta-CGRP, CALC2, CGRP-II, Beta-type CGRP |
| Purification | Protein A/G purified from cell culture supernatant. |
| Endotoxin level | Please contact with the lab for this information. |
| Expression system | Mammalian Cells |
| Accession | P01258 & P10092 |

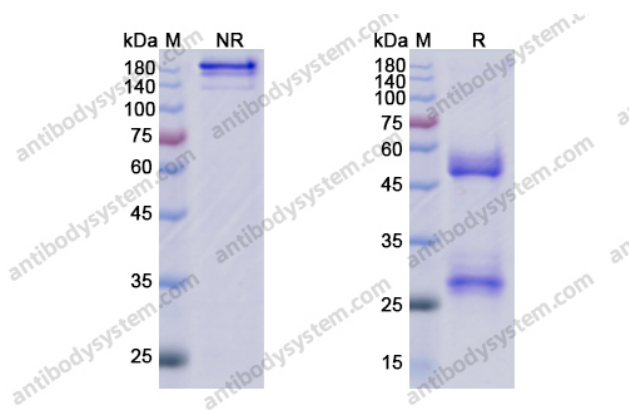
Stability and Storage

Use a manual defrost freezer and avoid repeated freeze-thaw cycles.

Store at 4°C short term (1-2 weeks). Store at -20°C 12 months. Store at -80°C long term.

Note

For research use only. Not suitable for clinical or therapeutic use.

Data Image

SDS-PAGE

SDS PAGE for Eptinezumab