

Research Grade Nivolumab

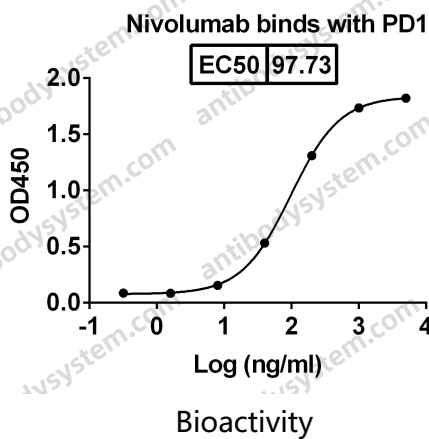
Summary

Catalog No.	DHH02209
Alternative Names	BMS-936558, MDX-1106, ONO-4538, CAS: 946414-94-4
Clone ID	Nivolumab
Host species	Human
Species reactivity	Human
Form	Liquid
Storage buffer	0.01M PBS, pH 7.4.
Concentration	1 mg/ml
Purity	>95% as determined by SDS-PAGE.
Clonality	Monoclonal
Isotype	IgG4-kappa
Applications	Research Grade Biosimilar
Target	Programmed cell death protein 1, Protein PD-1, hPD-1, PD1, PDCD1, CD279
Purification	Protein A/G purified from cell culture supernatant.
Endotoxin level	Please contact with the lab for this information.
Expression system	Mammalian Cells
Accession	Q15116

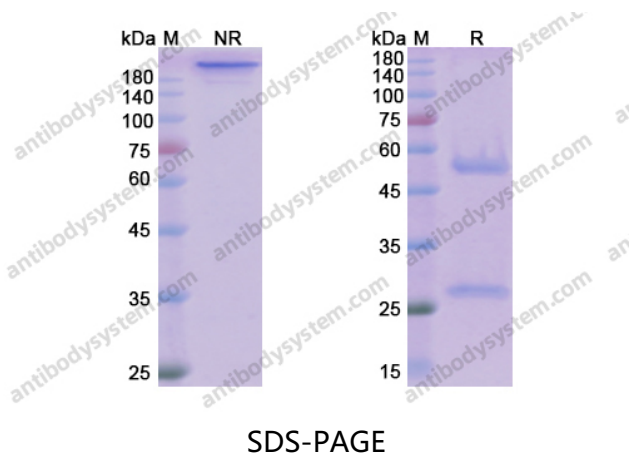
Stability and Storage Use a manual defrost freezer and avoid repeated freeze-thaw cycles.
Store at 4°C short term (1-2 weeks). Store at -20°C 12 months. Store at -80°C long term.

Note For research use only. Not suitable for clinical or therapeutic use.

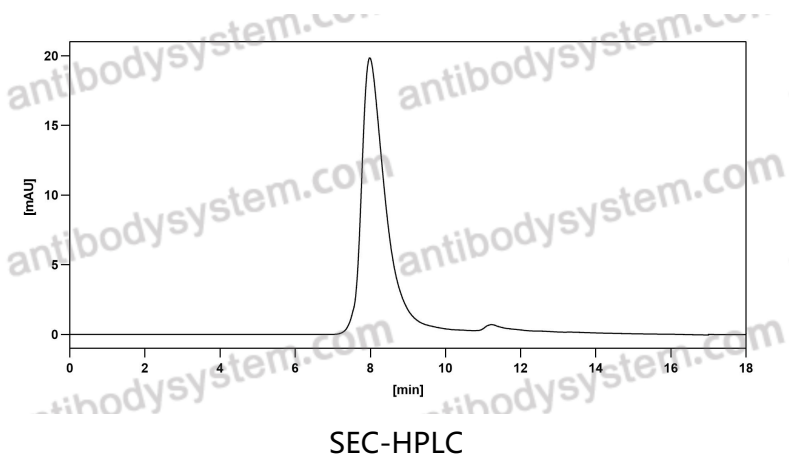
Data Image



Detects Human CD279/PDCD1/PD1 in indirect ELISAs.



SDS PAGE for Nivolumab



The purity of this product is >95% as determined by SEC-HPLC.