

# Anti-SARS-CoV-2 S2 Protein antibody (2F8)

## Summary

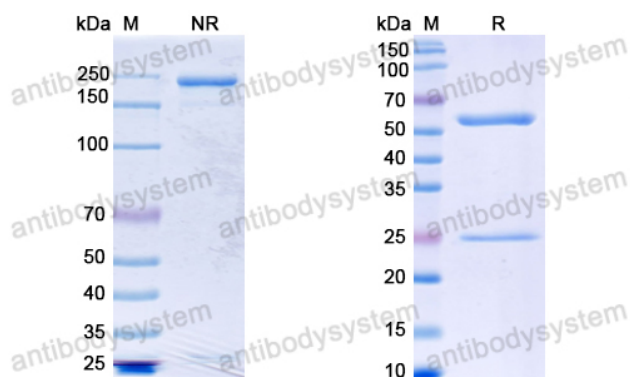
---

<b>Catalog No.</b>	RVV00505
<b>Clone ID</b>	2F8
<b>Host species</b>	Human
<b>Species reactivity</b>	SARS-CoV-2 (2019-nCoV)
<b>Form</b>	Liquid
<b>Storage buffer</b>	0.01M PBS, pH 7.4.
<b>Concentration</b>	1 mg/ml
<b>Purity</b>	>95% as determined by SDS-PAGE.
<b>Clonality</b>	Monoclonal
<b>Isotype</b>	IgG1, kappa
<b>Applications</b>	ELISA, WB
<b>Target</b>	S2 Protein,Spike protein S2,Spike protein S2',Spike glycoprotein,S glycoprotein,E2,Peplomer protein,Spike protein S1,S
<b>Purification</b>	Protein A/G purified from cell culture supernatant.
<b>Endotoxin level</b>	Please contact with the lab for this information.
<b>Expression system</b>	Mammalian Cells
<b>Accession</b>	P0DTC2
<b>Stability and Storage</b>	Use a manual defrost freezer and avoid repeated freeze-thaw cycles. Store at 4°C short term (1-2 weeks). Store at -20°C 12 months. Store at -80°C long term.

Note

For research use only.

## Data Image



SDS PAGE for Anti-SARS2 S2 Antibody(R2P2-F8)

SDS-PAGE