

# Recombinant Human ILF3 Protein, N-His

## Summary

---

<b>Catalog No.</b>	YHG33301
<b>Alternative Names</b>	ILF3, MPHOSPH4, DRBP76, TCP80, DRBF, Translational control protein 80, M-phase phosphoprotein 4, Nuclear factor associated with dsRNA, NF90, NFAR, MPP4, NF-AT-90, Double-stranded RNA-binding protein 76, Interleukin enhancer-binding factor 3, Nuclear factor of activated T-cells 90 kDa
<b>Form</b>	Lyophilized
<b>Storage buffer</b>	Lyophilized from a solution in TBS pH 8.0, 0.02% NLS, 1mM EDTA, 4% Trehalose, 1% Mannitol.
<b>Concentration</b>	0.3 mg/ml by bradford before be lyophilization
<b>Purity</b>	>90% as determined by SDS-PAGE.
<b>Applications</b>	ELISA, Immunogen, SDS-PAGE, WB, Bioactivity testing in progress
<b>Endotoxin level</b>	Please contact with the lab for this information.
<b>Expression system</b>	E. coli
<b>Accession</b>	Q12906
<b>Protein length</b>	Tyr672-Tyr891
<b>Nature</b>	Recombinant
<b>Predicted molecular weight</b>	24.49 kDa
<b>Stability and Storage</b>	Use a manual defrost freezer and avoid repeated freeze thaw cycles. Store at 2 to 8°C for frequent use. Store at -20 to -80°C for twelve months from the date of receipt.

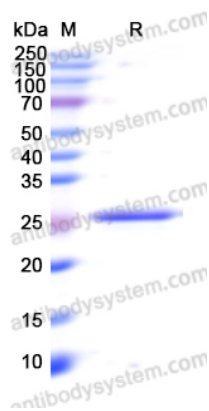
---

Recombinant Proteins & Antibodies

<b>Reconstitution</b>	It suggests that the concentration of the protein be redissolved at 0.3mg/ml with sterile water.
<b>Species</b>	Homo sapiens (Human)
<b>Shipping</b>	In general, proteins are provided as lyophilized powder/frozen liquid. They are shipped out with dry ice/blue ice unless customers require otherwise.
<b>Note</b>	For research use only.

## Data Image

---



SDS-PAGE

SDS PAGE for recombinant Human ILF3 protein