

# Recombinant Human CD326/EPCAM Protein, C-His

## Summary

---

<b>Catalog No.</b>	EHD17401
<b>Alternative Names</b>	Epithelial glycoprotein 314, hEGP314, Major gastrointestinal tumor-associated protein GA733-2, EGP314, TACSTD1, Adenocarcinoma-associated antigen, TROP1, EPCAM, Epithelial glycoprotein, KS 1/4 antigen, Tumor-associated calcium signal transducer 1, M4S1, CD326, Ep-CAM, EGP, Epithelial cell adhesion molecule, M1S2, KSA, Cell surface glycoprotein Trop-1, GA733-2, Epithelial cell surface antigen, MIC18
<b>Form</b>	Lyophilized
<b>Storage buffer</b>	Lyophilized from a solution in PBS, pH 7.4, 5 % trehalose, 5 %mannitol.
<b>Purity</b>	>90% as determined by SDS-PAGE.
<b>Applications</b>	ELISA, Immunogen, SDS-PAGE, WB, Bioactivity testing in progress
<b>Endotoxin level</b>	Please contact with the lab for this information.
<b>Expression system</b>	Mammalian Cells
<b>Accession</b>	P16422
<b>Protein length</b>	Met1-Lys265
<b>Nature</b>	Recombinant
<b>Predicted molecular weight</b>	30.58 kDa
<b>Stability and Storage</b>	Use a manual defrost freezer and avoid repeated freeze thaw cycles. Store at 2 to 8°C for frequent use. Store at -20 to -80°C for twelve months from the date of receipt.
<b>Reconstitution</b>	Reconstitute in sterile water for a stock solution.

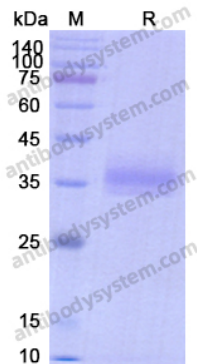
## Recombinant Proteins & Antibodies

**Species** Homo sapiens (Human)

**Shipping** In general, proteins are provided as lyophilized powder/frozen liquid.  
They are shipped out with dry ice/blue ice unless customers require otherwise.

**Note** For research use only.

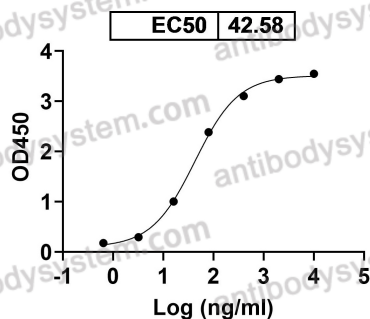
## Data Image



SDS-PAGE

SDS PAGE for recombinant Human CD326 / EPCAM

Citatuzumab binds with EPCAM



Bioactivity

Detects Citatuzumab in indirect ELISAs.