

# Recombinant Human CD274/PD-L1/B7-H1 Protein, C-His

## Summary

---

<b>Catalog No.</b>	EHJ70101
<b>Alternative Names</b>	B7-H1, Programmed cell death 1 ligand 1, PDCD1 ligand 1, PDCD1L1, B7 homolog 1, PDCD1LG1, PDL1, hPD-L1, Programmed death ligand 1, B7H1, PD-L1, CD274
<b>Form</b>	Lyophilized
<b>Storage buffer</b>	Lyophilized from a solution in PBS pH 7.4, 1mM EDTA, 4% Trehalose, 1% Mannitol.
<b>Purity</b>	>90% as determined by SDS-PAGE.
<b>Applications</b>	ELISA, Immunogen, SDS-PAGE, WB, Bioactivity testing in progress
<b>Endotoxin level</b>	Please contact with the lab for this information.
<b>Expression system</b>	Mammalian Cells
<b>Accession</b>	Q9NZQ7
<b>Protein length</b>	Met1-Arg238
<b>Nature</b>	Recombinant
<b>Predicted molecular weight</b>	33.28 kDa
<b>Stability and Storage</b>	Use a manual defrost freezer and avoid repeated freeze thaw cycles. Store at 2 to 8°C for frequent use. Store at -20 to -80°C for twelve months from the date of receipt.
<b>Reconstitution</b>	Reconstitute in sterile water for a stock solution. A copy of datasheet will be provided with the products, please refer to it for details.

## Recombinant Proteins & Antibodies

**Species** Homo sapiens (Human)

**Shipping** In general, proteins are provided as lyophilized powder/frozen liquid. They are shipped out with dry ice/blue ice unless customers require otherwise.

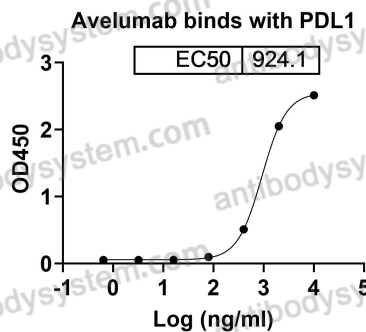
**Note** For research use only.

## Data Image



SDS-PAGE

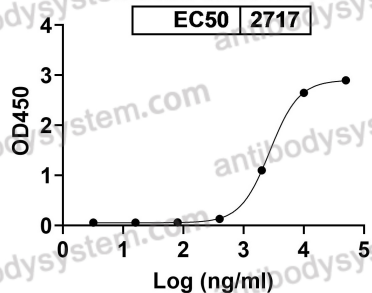
SDS PAGE for recombinant Human CD274 / PD-L1 / B7-H1



Bioactivity

Detects Avelumab in indirect ELISAs.

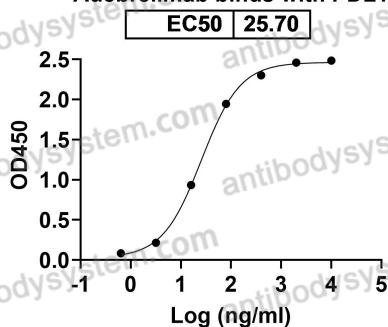
Atezolizumab binds with PDL1



Bioactivity

Detects Atezolizumab in indirect ELISAs.

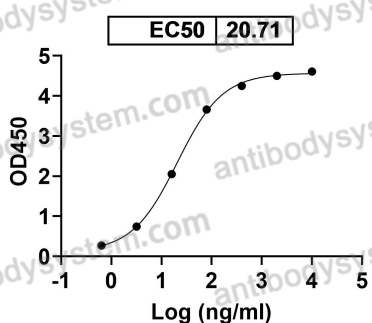
Adebrelimab binds with PDL1



Bioactivity

Detects Adebrelimab in indirect ELISAs.

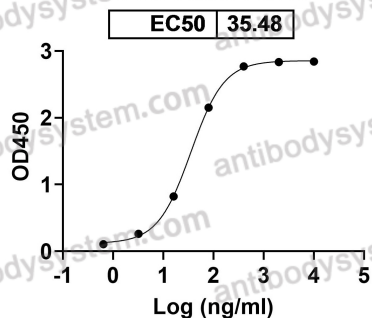
Anti-Human CD274/PD-L1/B7-H1 Antibody (22C3) binds with Human PD-L1



Bioactivity

Detects Human CD274/PD-L1/B7-H1 Antibody in indirect ELISAs.

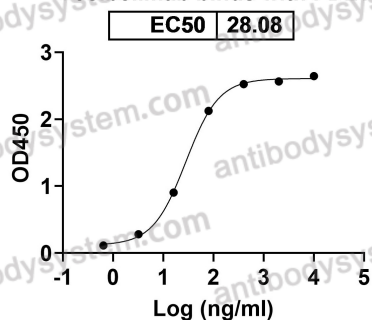
Manelimab binds with PDL1



Bioactivity

Detects Manelimab in indirect ELISAs.

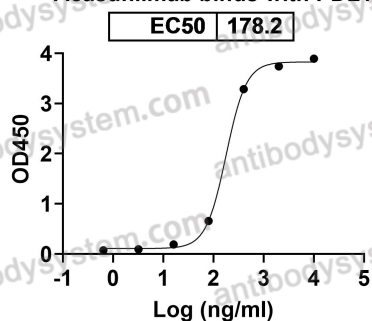
Cosibelimab binds with PDL1



Bioactivity

Detects Cosibelimab in indirect ELISAs.

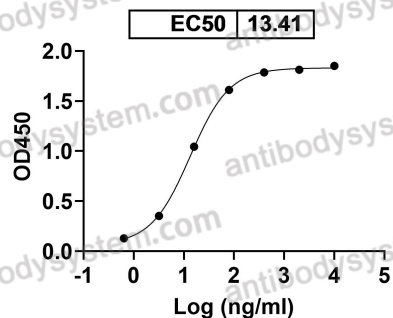
Acasunlimab binds with PDL1



Bioactivity

Detects Acasunlimab in indirect ELISAs.

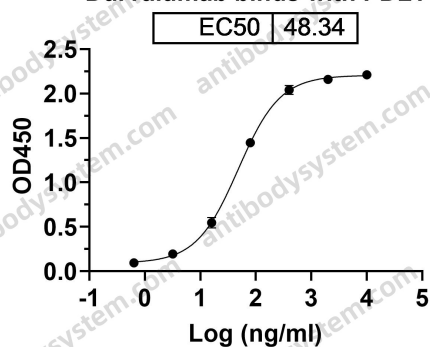
**Erfonrilimab binds with PDL1**



Bioactivity

Detects Erfonrilimab in indirect ELISAs.

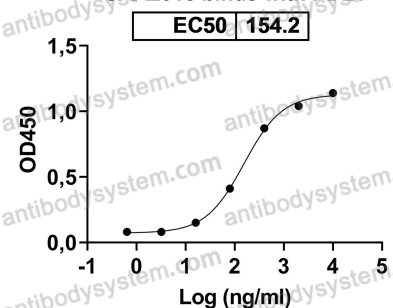
**Durvalumab binds with PDL1**



Bioactivity

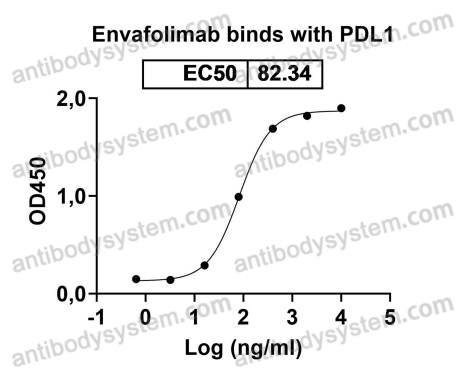
Detects Human CD274/PD-L1/B7-H1 in indirect ELISAs.

**SAA2018 binds with PDL1**



Bioactivity

Detects Human PD-L1 Antibody in indirect ELISAs.



Bioactivity

Detects Envafolimab in indirect ELISAs.