

# Research Grade Rosopatamab

## Summary

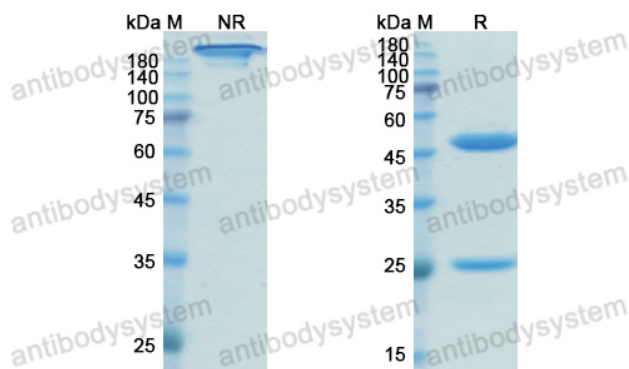
---

<b>Catalog No.</b>	DHG01304
<b>Alternative Names</b>	J-591, MLN-591, huJ-591, HuJ591-DOTA, Rosopatamab tetraxetan, CAS: 2260767-49-3
<b>Clone ID</b>	Rosopatamab
<b>Host species</b>	Chimeric
<b>Species reactivity</b>	Human
<b>Form</b>	Liquid
<b>Storage buffer</b>	0.01M PBS, pH 7.4.
<b>Concentration</b>	1.8mg/ml
<b>Purity</b>	>95% as determined by SDS-PAGE.
<b>Clonality</b>	Monoclonal
<b>Isotype</b>	IgG1-kappa
<b>Applications</b>	Research Grade Biosimilar
<b>Target</b>	NAALAD1, Prostate-specific membrane antigen, NAALADase I, PSMA, PSM, Pteroylpoly-gamma-glutamate carboxypeptidase, Glutamate carboxypeptidase 2, N-acetylated-alpha-linked acidic dipeptidase I, Glutamate carboxypeptidase II, FOLH1, FGCP, FOLH, Folylpoly-gamma-glutamate carboxypeptidase, Folate hydrolase 1, GCPII, Membrane glutamate carboxypeptidase, Cell growth-inhibiting gene 27 protein, mGCP
<b>Purification</b>	Protein A/G purified from cell culture supernatant.

## Recombinant Proteins & Antibodies

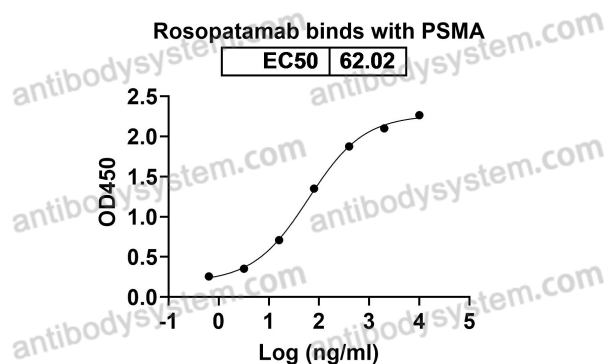
<b>Endotoxin level</b>	Please contact with the lab for this information.
<b>Expression system</b>	Mammalian Cells
<b>Accession</b>	Q04609
<b>Stability and Storage</b>	Use a manual defrost freezer and avoid repeated freeze-thaw cycles. Store at 4°C short term (1-2 weeks). Store at -20°C 12 months. Store at -80°C long term.
<b>Note</b>	For research use only. Not suitable for clinical or therapeutic use.

## Data Image



SDS PAGE for Rosopatamab

SDS-PAGE



Detects FOLH1/PSMA in indirect ELISAs.

Bioactivity