

Recombinant Human CD279/PDCD1/PD1 Protein, C-His

Summary

Catalog No.	EHH02202
Alternative Names	Programmed cell death protein 1, Protein PD-1, hPD-1, PD1, PDCD1, CD279
Form	Liquid
Storage buffer	PBS pH 7.4
Concentration	3 mg/ml
Purity	>90% as determined by SDS-PAGE.
Applications	ELISA, Immunogen, SDS-PAGE, WB, Bioactivity testing in progress
Endotoxin level	Please contact with the lab for this information.
Expression system	Mammalian Cells
Accession	Q15116
Protein length	Pro21-Gln167
Nature	Recombinant
Predicted molecular weight	19.75 kDa
Stability and Storage	Use a manual defrost freezer and avoid repeated freeze thaw cycles. Store at 2 to 8°C for frequent use. Store at -20 to -80°C for twelve months from the date of receipt.
Species	Homo sapiens (Human)

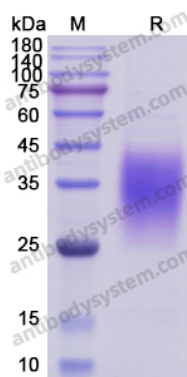
Shipping

In general, proteins are provided as lyophilized powder/frozen liquid. They are shipped out with dry ice/blue ice unless customers require otherwise.

Note

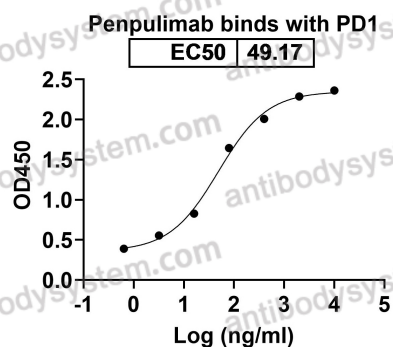
For research use only.

Data Image



SDS-PAGE

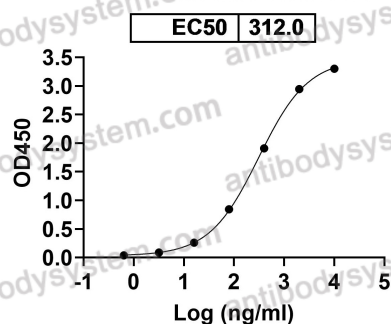
SDS PAGE for recombinant Human CD279 / PDCD1 / PD1



Bioactivity

Detects Penpulimab in indirect ELISAs.

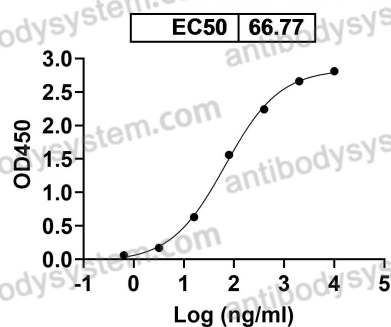
Vudalimab binds with PD1



Detects Vudalimab in indirect ELISAs.

Bioactivity

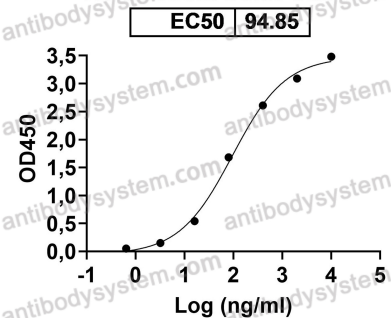
Rosnilimab binds with PD1



Detects Rosnilimab in indirect ELISAs.

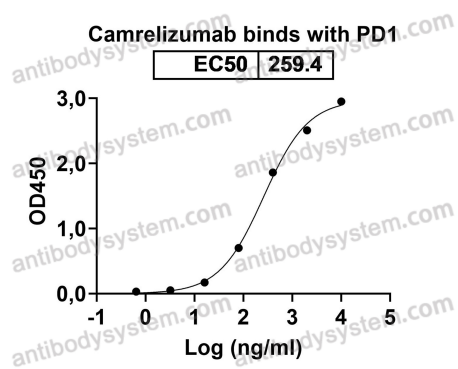
Bioactivity

Nofazinlimab binds with PD1



Detects Nofazinlimab in indirect ELISAs.

Bioactivity



Bioactivity

Detects Camrelizumab in indirect ELISAs.