

Recombinant Human SIGLEC14 Protein, N-His

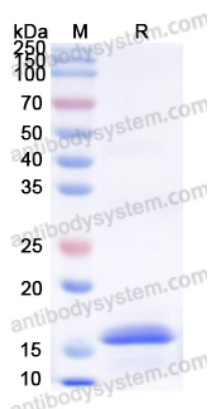
Summary

Catalog No.	YHG19701
Alternative Names	Sialic acid-binding Ig-like lectin 14, Siglec-14, SIGLEC14
Form	Liquid
Storage buffer	PBS pH7.4, 0.02%NLS, 10% Glycerol
Concentration	0.54 mg/ml
Purity	>90% as determined by SDS-PAGE.
Applications	ELISA, Immunogen, SDS-PAGE, WB, Bioactivity testing in progress
Endotoxin level	Please contact with the lab for this information.
Expression system	E. coli
Accession	Q08ET2
Protein length	Gln24-Leu137
Nature	Recombinant
Predicted molecular weight	15.68 kDa
Stability and Storage	Use a manual defrost freezer and avoid repeated freeze thaw cycles. Store at 2 to 8°C for frequent use. Store at -20 to -80°C for twelve months from the date of receipt.
Species	Homo sapiens (Human)
Shipping	In general, proteins are provided as lyophilized powder/frozen liquid. They are shipped out with dry ice/blue ice unless customers require otherwise.

Note

For research use only.

Data Image



SDS-PAGE

SDS PAGE for recombinant Human SIGLEC14 protein