

# Recombinant Human MYL6 Protein, N-His

## Summary

---

<b>Catalog No.</b>	YHF37301
<b>Alternative Names</b>	MLC-3, MYL6, Myosin light polypeptide 6, Myosin light chain 3, 17 kDa myosin light chain, Myosin light chain A3, LC17, Myosin light chain alkali 3, Smooth muscle and nonmuscle myosin light chain alkali 6
<b>Form</b>	Lyophilized
<b>Storage buffer</b>	Lyophilized from a solution in PBS pH 7.4, 0.02% NLS, 1mM EDTA, 4% Trehalose, 1% Mannitol.
<b>Purity</b>	>90% as determined by SDS-PAGE.
<b>Applications</b>	ELISA, Immunogen, SDS-PAGE, WB, Bioactivity testing in progress
<b>Endotoxin level</b>	Please contact with the lab for this information.
<b>Expression system</b>	E. coli
<b>Accession</b>	P60660
<b>Protein length</b>	Phe4-Arg146
<b>Nature</b>	Recombinant
<b>Predicted molecular weight</b>	18.38 kDa
<b>Stability and Storage</b>	Use a manual defrost freezer and avoid repeated freeze thaw cycles. Store at 2 to 8°C for frequent use. Store at -20 to -80°C for twelve months from the date of receipt.
<b>Reconstitution</b>	Reconstitute in sterile water for a stock solution. A copy of datasheet will be provided with the products, please refer to it for details.
<b>Species</b>	Homo sapiens (Human)

**Shipping**

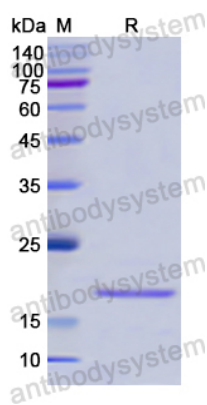
In general, proteins are provided as lyophilized powder/frozen liquid. They are shipped out with dry ice/blue ice unless customers require otherwise.

**Note**

For research use only.

**Data Image**

---



SDS-PAGE

SDS PAGE for recombinant Human MYL6