

Recombinant Human CTSC Protein, N-His

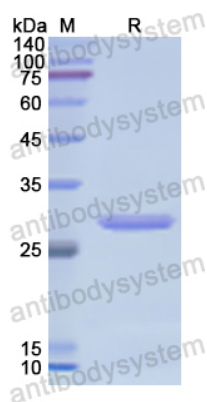
Summary

Catalog No.	YHE99101
Alternative Names	Dipeptidyl peptidase 1, Dipeptidyl peptidase I exclusion domain chain, DPPI, Cathepsin J, Dipeptidyl transferase, Dipeptidyl peptidase I heavy chain, CTSC, Dipeptidyl peptidase I, Dipeptidyl peptidase I light chain, CPPI, Cathepsin C, DPP-I
Form	Lyophilized
Storage buffer	Lyophilized from a solution in PBS pH 7.4, 0.02% NLS, 1mM EDTA, 4% Trehalose, 1% Mannitol.
Purity	>90% as determined by SDS-PAGE.
Applications	ELISA, Immunogen, SDS-PAGE, WB, Bioactivity testing in progress
Endotoxin level	Please contact with the lab for this information.
Expression system	E. coli
Accession	P53634
Protein length	Leu231-Leu463
Nature	Recombinant
Predicted molecular weight	28.34 kDa
Stability and Storage	Use a manual defrost freezer and avoid repeated freeze thaw cycles. Store at 2 to 8°C for frequent use. Store at -20 to -80°C for twelve months from the date of receipt.
Reconstitution	Reconstitute in sterile water for a stock solution. A copy of datasheet will be provided with the products, please refer to it for details.

Recombinant Proteins & Antibodies

Species	Homo sapiens (Human)
Shipping	In general, proteins are provided as lyophilized powder/frozen liquid. They are shipped out with dry ice/blue ice unless customers require otherwise.
Note	For research use only.

Data Image



SDS-PAGE

SDS PAGE for recombinant Human CTSC