

# Research Grade Petosemtamab

## Summary

---

<b>Catalog No.</b>	DHB86918
<b>Alternative Names</b>	Bispecific, MCLA-158, CAS: 2213450-26-9
<b>Clone ID</b>	Petosemtamab
<b>Host species</b>	Human
<b>Species reactivity</b>	Human
<b>Form</b>	Liquid
<b>Storage buffer</b>	0.01M PBS, pH 7.4.
<b>Concentration</b>	1 mg/ml
<b>Purity</b>	>95% as determined by SDS-PAGE.
<b>Clonality</b>	Monoclonal
<b>Isotype</b>	IgG1-kappa
<b>Applications</b>	Research Grade Biosimilar
<b>Target</b>	HER1, Receptor tyrosine-protein kinase erbB-1, Proto-oncogene c-ErbB-1, Epidermal growth factor receptor, EGFR, ERBB1, ERBB, G-protein coupled receptor 49, G-protein coupled receptor HG38, LGR5, GPR67, GPR49, G-protein coupled receptor 67, Leucine-rich repeat-containing G-protein coupled receptor 5
<b>Purification</b>	Protein A/G purified from cell culture supernatant.
<b>Endotoxin level</b>	Please contact with the lab for this information.
<b>Expression system</b>	Mammalian Cells

## Recombinant Proteins &amp; Antibodies

**Accession** P00533 & O75473**Stability and Storage**

Use a manual defrost freezer and avoid repeated freeze-thaw cycles.

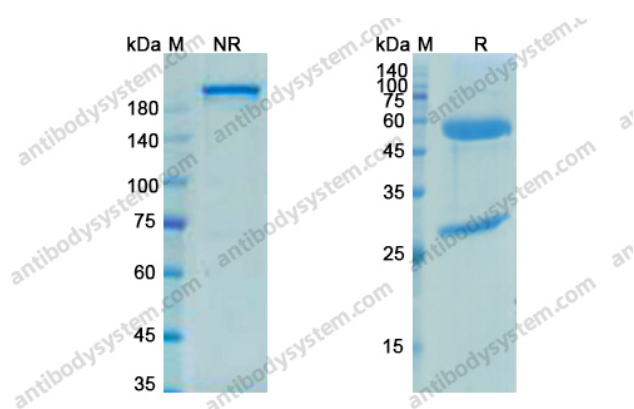
Store at 4°C short term (1-2 weeks). Store at -20°C 12 months. Store at -80°C long term.

**Note**

For research use only. Not suitable for clinical or therapeutic use.

## Data Image

---



SDS PAGE for Petosemtamab

SDS-PAGE