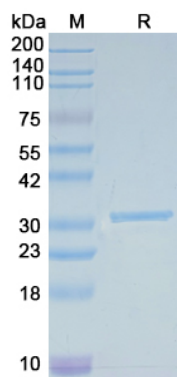


Recombinant Escherichia phage lambda bet Protein, N-His

Summary

Catalog No.	YVV47601
Alternative Names	Recombination protein bet, bet, betA, red-beta, redB
Form	Lyophilized
Storage buffer	Lyophilized from a solution in PBS pH 7.4, 0.02% SKL, 1mM EDTA, 5% Trehalose, 2% Mannitol.
Purity	>90% as determined by SDS-PAGE.
Applications	ELISA, Immunogen, SDS-PAGE, WB, Bioactivity testing in progress
Endotoxin level	Please contact with the lab for this information.
Expression system	E. coli
Accession	P03698
Protein length	Met1-Ala261
Nature	Recombinant
Predicted molecular weight	31.84 kDa
Stability and Storage	Use a manual defrost freezer and avoid repeated freeze thaw cycles. Store at 2 to 8°C for frequent use. Store at -20 to -80°C for twelve months from the date of receipt.
Reconstitution	Reconstitute in sterile water for a stock solution.
Species	Escherichia phage lambda (Bacteriophage lambda)
Note	For research use only.

Data Image



SDS-PAGE

SDS-PAGE for Recombinant Escherichia phage
lambda bet Protein