

Research Grade Laprituximab

Summary

Catalog No.	DHB86912
Alternative Names	IMGN-289, J2898A-SMCC-DM1, J2898A, CAS: 1622327-38-1
Clone ID	Laprituximab
Host species	Chimeric
Species reactivity	Human
Form	Liquid
Storage buffer	0.01M PBS, pH 7.4.
Concentration	1 mg/ml
Purity	>95% as determined by SDS-PAGE.
Clonality	Monoclonal
Isotype	IgG1-kappa
Applications	Research Grade Biosimilar
Target	HER1, Receptor tyrosine-protein kinase erbB-1, Proto-oncogene c-ErbB-1, Epidermal growth factor receptor, EGFR, ERBB1, ERBB
Purification	Protein A/G purified from cell culture supernatant.
Endotoxin level	Please contact with the lab for this information.
Expression system	Mammalian Cells
Accession	P00533

Recombinant Proteins & Antibodies

Stability and Storage

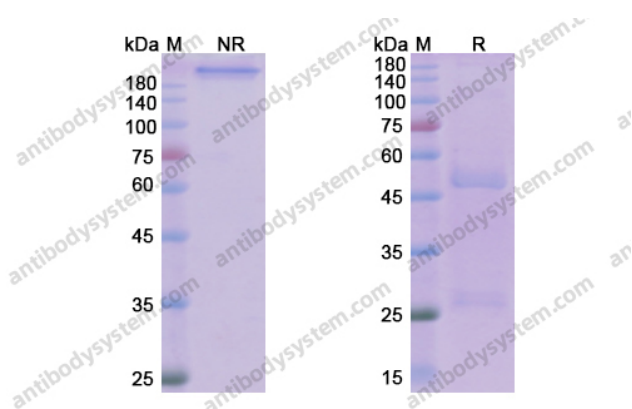
Use a manual defrost freezer and avoid repeated freeze-thaw cycles.

Store at 4°C short term (1-2 weeks). Store at -20°C 12 months. Store at -80°C long term.

Note

For research use only. Not suitable for clinical or therapeutic use.

Data Image



SDS-PAGE

SDS PAGE for Laprituximab