

# Anti-GGGGS Linker Antibody (R4E06)

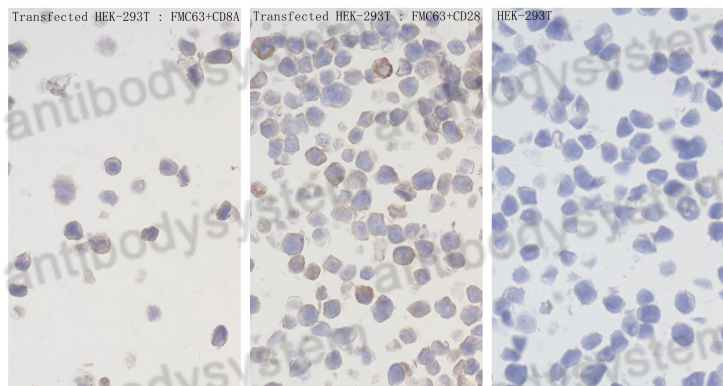
## Summary

---

<b>Catalog No.</b>	RGP16001
<b>Clone ID</b>	R4E06
<b>Host species</b>	Rabbit
<b>Tested applications</b>	ELISA: 1:5000-1:10000, IF: 1:2000-1:8000, IHC: 1:40000-1:160000, WB: 1:1000-1:6000, FCM: 0.25µg per 10 <sup>6</sup> cells in 100µl suspension
<b>Species reactivity</b>	General
<b>Form</b>	Liquid
<b>Storage buffer</b>	PBS with 0.09% sodium azide
<b>Concentration</b>	1.2 mg/ml
<b>Purity</b>	>95% as determined by SDS-PAGE.
<b>Clonality</b>	Monoclonal
<b>Isotype</b>	IgG
<b>Applications</b>	ELISA, FCM, ICC, IF, IHC, WB
<b>Target</b>	G4S, G4S link, G4S Linker, GGGGS, GS Linker
<b>Purification</b>	Protein A/G purified from cell culture supernatant.
<b>Endotoxin level</b>	Please contact with the lab for this information.
<b>Stability and Storage</b>	Store at 2-8 °C 12 months.
<b>Note</b>	For research use only.

## Data Image

---



Immunocytochemistry

Immunohistochemical analysis of paraffin-embedded Transfected HEK-293T cells slide using RGP16001 (GGGS Linker antibody) at dilution of 1:80000.