

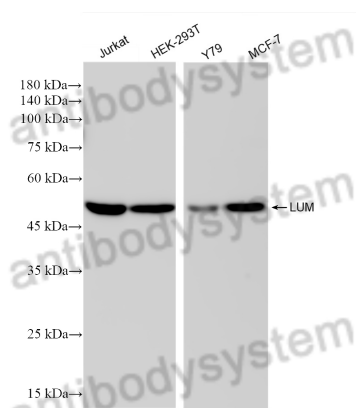
# Anti-Human LUM/Lumican Antibody (R4D87)

## Summary

---

<b>Catalog No.</b>	RHE89705
<b>Clone ID</b>	R4D87
<b>Host species</b>	Rabbit
<b>Species reactivity</b>	Human
<b>Form</b>	Liquid
<b>Storage buffer</b>	0.01M PBS, pH 7.4, 50% Glycerol, 0.05% Proclin 300.
<b>Concentration</b>	1 mg/ml
<b>Purity</b>	>95% as determined by SDS-PAGE.
<b>Clonality</b>	Monoclonal
<b>Isotype</b>	IgG
<b>Applications</b>	ELISA, IHC, WB
<b>Target</b>	Keratan sulfate proteoglycan lumican, Lumican, SLRR2D, LDC, LUM, KSPG lumican
<b>Purification</b>	Protein A/G purified from cell culture supernatant.
<b>Endotoxin level</b>	Please contact with the lab for this information.
<b>Stability and Storage</b>	Use a manual defrost freezer and avoid repeated freeze-thaw cycles. Store at 4°C short term (1-2 weeks). Store at -20°C 12 months. Store at -80°C long term.
<b>Note</b>	For research use only.

## Data Image



Western Blot

Various lysates were subjected to SDS PAGE followed by western blot with LUM/Lumican antibody (RHE89705) at 1 µg/ml.

Lane 1: Jurkat

Lane 2: HEK-293T

Lane 3: Y79

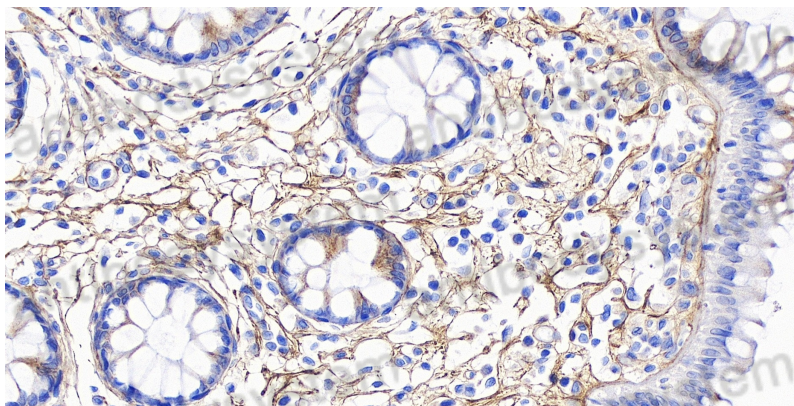
Lane 4: MCF7

Second Ab: Goat Anti-Rabbit IgG H&L

Polyclonal antibody, HRP (PTB96431) at 0.1 µg/mL.

Predict MW: 39 kDa

Observed MW: 50 kDa



Immunohistochemical

Immunohistochemical analysis of paraffin-embedded human colon tissue slide using RHE89705 (Lumican antibody) at dilution of 1:2000 (under 20x lens). Heat mediated antigen retrieval with Tris-EDTA buffer (pH 9.0).