

Anti-Toxoplasma gondii rhoptry ROP1 Antibody (R4D83)

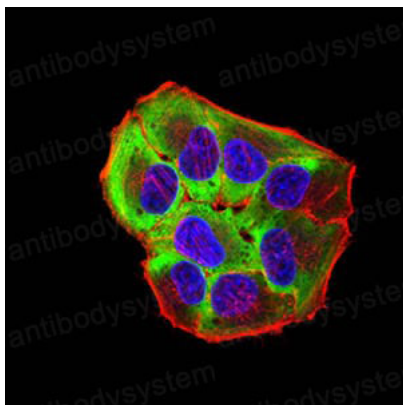
Summary

Catalog No.	RXX54902
Clone ID	R4D83
Host species	Mouse
Tested applications	ELISA: 1:10000, IF: 1:200-1:1000, IHC: 1:200-1:1000
Species reactivity	Toxoplasma gondii rhoptry
Form	Liquid
Storage buffer	0.01M PBS, pH 7.4, 0.05% Sodium Azide.
Concentration	1 mg/ml
Purity	>95% as determined by SDS-PAGE.
Clonality	Monoclonal
Isotype	IgG2a
Applications	ELISA, IF, IHC
Target	ROP1
Purification	Protein A/G purified from cell culture supernatant.
Endotoxin level	Please contact with the lab for this information.
Stability and Storage	Use a manual defrost freezer and avoid repeated freeze-thaw cycles. Store at 4°C short term (1-2 weeks). Store at -20°C 12 months. Store at -80°C long term.

Note

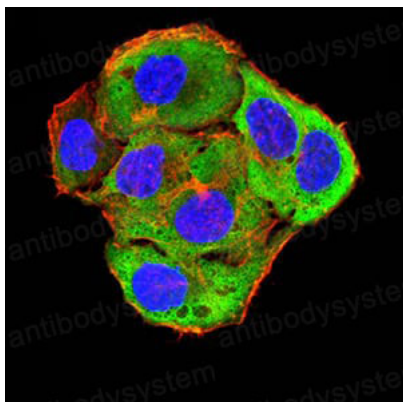
For research use only.

Data Image



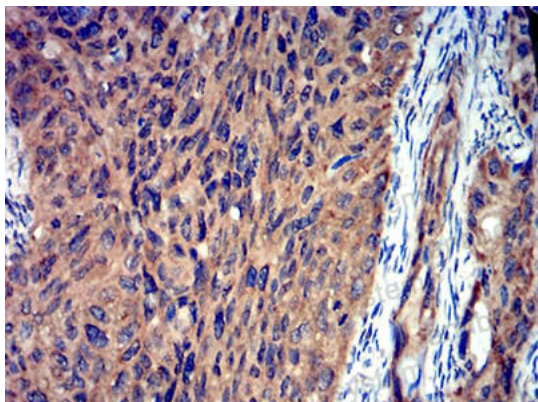
Immunofluorescence

Immunofluorescence analysis of Hela cells using ROP1 mouse mAb (green), DRAQ5 fluorescent DNA dye. Red: Actin filaments have been labeled with Fluor- 555 phalloidin.



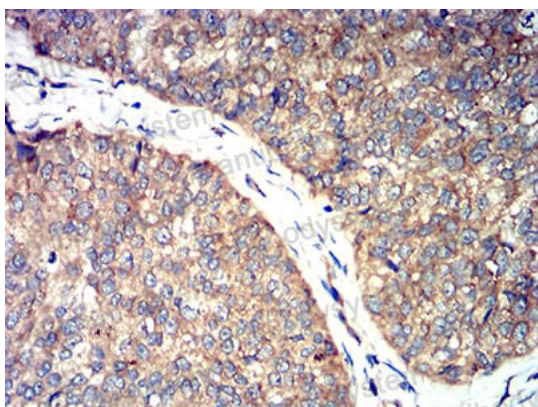
Immunofluorescence

Immunofluorescence analysis of SMMC-7721 cells using ROP1 mouse mAb (green), DRAQ5 fluorescent DNA dye. Red: Actin filaments have been labeled with Alexa Fluor- 555 phalloidin.



Immunohistochemical

Immunohistochemical analysis of paraffin-embedded human cervical cancer tissues using ROP1 mouse mAb with DAB



Immunohistochemical

Immunohistochemical analysis of paraffin-embedded human bladder cancer tissues using ROP1 mouse mAb with DAB