

Anti-HPV B19 NS1/Non-structural protein 1 Antibody (R4D73)

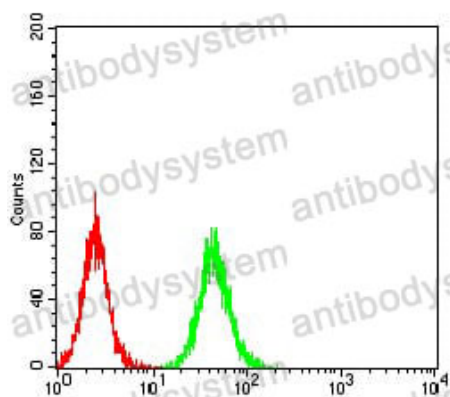
Summary

Catalog No.	RVV19701
Clone ID	R4D73
Host species	Mouse
Tested applications	ELISA: 1:10000, FCM: 1:200-1:400, IF: 1:200-1:1000
Species reactivity	Human parvovirus B19 (HPV B19)
Form	Liquid
Storage buffer	0.01M PBS, pH 7.4, 0.05% Sodium Azide.
Concentration	1 mg/ml
Purity	>95% as determined by SDS-PAGE.
Clonality	Monoclonal
Isotype	IgG1
Applications	ELISA, FCM, IF
Target	NS1/Non-structural protein 1
Purification	Protein A/G purified from cell culture supernatant.
Endotoxin level	Please contact with the lab for this information.
Stability and Storage	Use a manual defrost freezer and avoid repeated freeze-thaw cycles. Store at 4°C short term (1-2 weeks). Store at -20°C 12 months. Store at -80°C long term.

Note

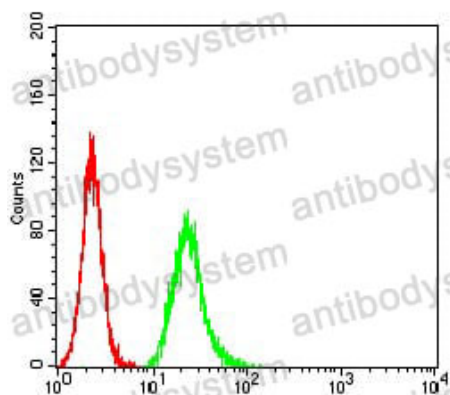
For research use only.

Data Image



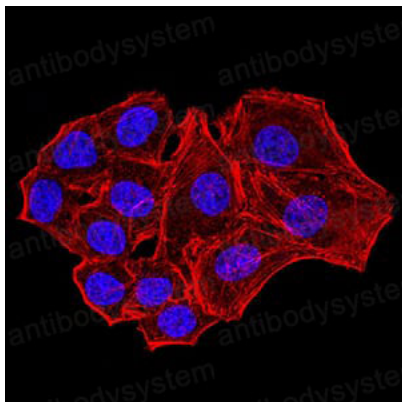
Flow Cytometry

Flow cytometric analysis of K562 cells using NS1 mouse mAb (green) and negative control (red).



Flow Cytometry

Flow cytometric analysis of HeLa cells using NS1 mouse mAb (green) and negative control (red).



Immunofluorescence

Immunofluorescence analysis of HeLa cells using NS1 mouse mAb. Blue: DRAQ5 fluorescent DNA dye. Red: Actin filaments have been labeled with Alexa Fluor- 555 phalloidin.



Immunofluorescence

Immunofluorescence analysis of HeLa cells using NS1 mouse mAb (green). Blue: DRAQ5 fluorescent DNA dye. Red: Actin filaments have been labeled with Alexa Fluor- 555 phalloidin.