

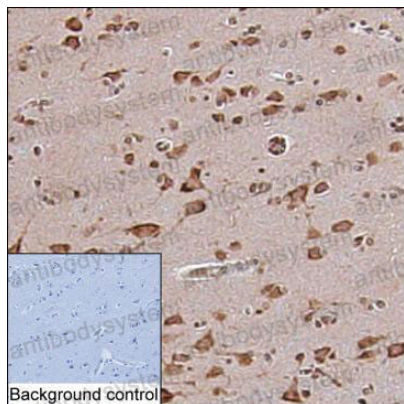
# Anti-DMXL2 Antibody (R4D60)

## Summary

---

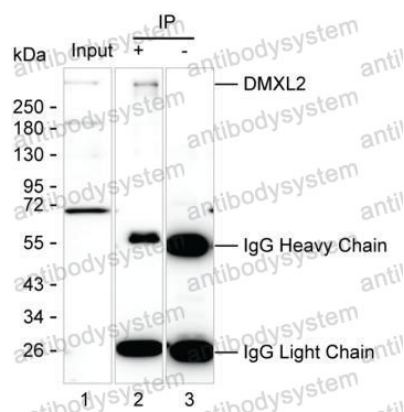
<b>Catalog No.</b>	RHP11602
<b>Clone ID</b>	R4D60
<b>Host species</b>	Mouse
<b>Tested applications</b>	IHC: 1:100-1:200, IP: 1:100-1:200
<b>Species reactivity</b>	Human
<b>Form</b>	Liquid
<b>Storage buffer</b>	0.01M PBS, pH 7.4, 0.05% Sodium Azide.
<b>Concentration</b>	1 mg/ml
<b>Purity</b>	>95% as determined by SDS-PAGE.
<b>Clonality</b>	Monoclonal
<b>Isotype</b>	IgG2b
<b>Applications</b>	IHC, IP
<b>Target</b>	DmX-like protein 2, Rabconnectin-3, DMXL2, KIAA0856
<b>Purification</b>	Protein A/G purified from cell culture supernatant.
<b>Endotoxin level</b>	Please contact with the lab for this information.
<b>Accession</b>	Q8TDJ6
<b>Stability and Storage</b>	Use a manual defrost freezer and avoid repeated freeze-thaw cycles. Store at 4°C short term (1-2 weeks). Store at -20°C 12 months. Store at -80°C long term.
<b>Note</b>	For research use only.

## Data Image



Immunohistochemical

IHC-P analysis of cerebral cortex tissue by DMXL2 antibody (RHP11602). IHC-P was performed using sections of the formalin-fixed paraffin-embedded cerebral cortex tissue; Result: Cytoplasm of neuronal cells and neuropil are positively stained.



Immunoprecipitation

Lane 1: HEK-293 lysate; Lane 2: DMXL2 immunoprecipitated from HEK-293 lysate by RHP11602; Lane 3: The same Lane 2 but use IgG isotype control antibody; Result: RHP11602 can immunoprecipitate DMXL2;