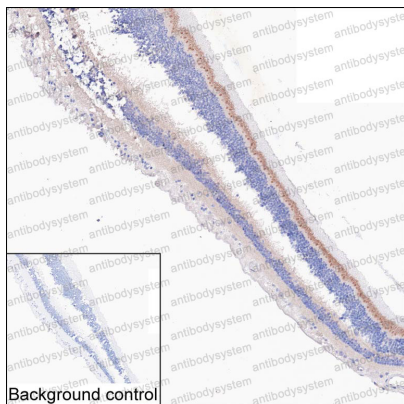


Anti-PCARE Antibody (R4D40)

Summary

Catalog No.	RHP09701
Clone ID	R4D40
Host species	Mouse
Tested applications	IHC: 1:100-1:200
Species reactivity	Human
Form	Liquid
Storage buffer	0.01M PBS, pH 7.4, 0.05% Sodium Azide.
Concentration	1 mg/ml
Purity	>95% as determined by SDS-PAGE.
Clonality	Monoclonal
Isotype	IgG1
Applications	IHC
Target	Photoreceptor cilium actin regulator, C2orf71, PCARE
Purification	Protein A/G purified from cell culture supernatant.
Endotoxin level	Please contact with the lab for this information.
Accession	A6NGG8
Stability and Storage	Use a manual defrost freezer and avoid repeated freeze-thaw cycles. Store at 4°C short term (1-2 weeks). Store at -20°C 12 months. Store at -80°C long term.
Note	For research use only.

Data Image



Immunohistochemical

IHC-P analysis of retina tissue by PCARE antibody (RHP09701). IHC-P was performed using sections of the formalin-fixed paraffin-embedded retina tissue; Result: Visual cone and visual rod layer are positively stained.