

Anti-SAMD13 Antibody (R4D38)

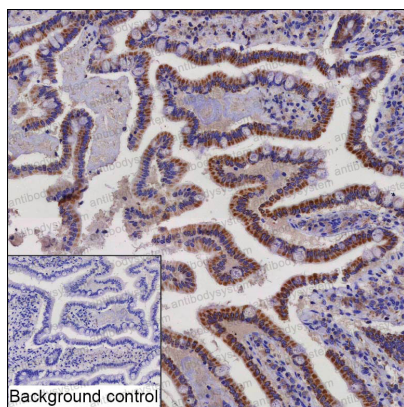
Summary

| | |
|------------------------------|---|
| Catalog No. | RHP09501 |
| Clone ID | R4D38 |
| Host species | Mouse |
| Tested applications | IHC: 1:25-1:200 |
| Species reactivity | Human |
| Form | Liquid |
| Storage buffer | 0.01M PBS, pH 7.4, 0.05% Sodium Azide. |
| Concentration | 1 mg/ml |
| Purity | >95% as determined by SDS-PAGE. |
| Clonality | Monoclonal |
| Isotype | IgG1 |
| Applications | IHC |
| Target | SAM domain-containing protein 13, SAMD13, Sterile alpha motif domain-containing protein 13 |
| Purification | Protein A/G purified from cell culture supernatant. |
| Endotoxin level | Please contact with the lab for this information. |
| Accession | Q5VXD3 |
| Stability and Storage | Use a manual defrost freezer and avoid repeated freeze-thaw cycles. Store at 4°C short term (1-2 weeks). Store at -20°C 12 months. Store at -80°C long term. |

Note

For research use only.

Data Image



Immunohistochemical

IHC-P analysis of colon tissue by SAMD13 antibody (RHP09501). IHC-P was performed using sections of the formalin-fixed paraffin-embedded colon tissue; Result: Glandular cells and cells in lamina propria are positively stained at the cytoplasm.