

Anti-MCF2L2 Antibody (R4D34)

Summary

Catalog No.	RHP09101
Clone ID	R4D34
Host species	Mouse
Tested applications	IHC: 1:20-1:100
Species reactivity	Human
Form	Liquid
Storage buffer	0.01M PBS, pH 7.4, 0.05% Sodium Azide.
Concentration	1 mg/ml
Purity	>95% as determined by SDS-PAGE.
Clonality	Monoclonal
Isotype	IgG1
Applications	IHC
Target	KIAA0861, Dbs-related Rho family guanine nucleotide exchange factor, MCF2L2, DRG, MCF2-transforming sequence-like protein 2, Probable guanine nucleotide exchange factor MCF2L2
Purification	Protein A/G purified from cell culture supernatant.
Endotoxin level	Please contact with the lab for this information.
Accession	Q86YR7

Stability and Storage

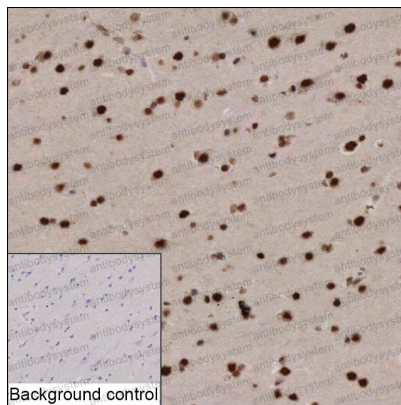
Use a manual defrost freezer and avoid repeated freeze-thaw cycles.

Store at 4°C short term (1-2 weeks). Store at -20°C 12 months. Store at -80°C long term.

Note

For research use only.

Data Image



Immunohistochemical

IHC-P analysis of brain tissue by MCF2L2 antibody (RHP09101). IHC-P was performed using sections of the formalin-fixed paraffin-embedded brain tissue; Result: Neuronal cells and glial cells are positively stained at the nuclei.