

Anti-SENTP8 Antibody (R4D30)

Summary

| | |
|----------------------------|--|
| Catalog No. | RHP08701 |
| Clone ID | R4D30 |
| Host species | Mouse |
| Tested applications | IHC: 1:25-1:200 |
| Species reactivity | Human |
| Form | Liquid |
| Storage buffer | 0.01M PBS, pH 7.4, 0.05% Sodium Azide. |
| Concentration | 1 mg/ml |
| Purity | >95% as determined by SDS-PAGE. |
| Clonality | Monoclonal |
| Isotype | IgG2a |
| Applications | IHC |
| Target | PRSC2, Protease, cysteine 2, NEDD8-specific protease 1, Sentrin-specific protease 8, Deneddylase-1, DEN1, SENP8, Sentrin/SUMO-specific protease SENP8, NEDP1 |
| Purification | Protein A/G purified from cell culture supernatant. |
| Endotoxin level | Please contact with the lab for this information. |
| Accession | Q96LD8 |

Stability and Storage

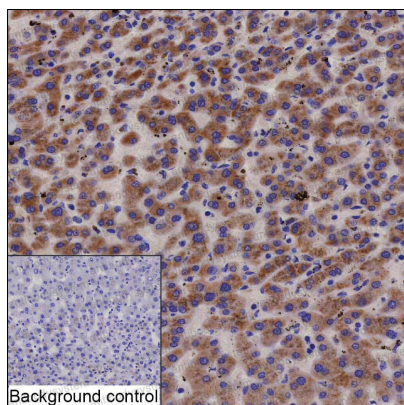
Use a manual defrost freezer and avoid repeated freeze-thaw cycles.

Store at 4°C short term (1-2 weeks). Store at -20°C 12 months. Store at -80°C long term.

Note

For research use only.

Data Image



Immunohistochemical

IHC-P analysis of liver tissue by SENP8 antibody (RHP08701). IHC-P was performed using sections of the formalin-fixed paraffin-embedded liver tissue; Result: Hepatocytes and cholangiocytes are positively stained at the cytoplasm.