

Anti-CBLL2 Antibody (R4C77)

Summary

| | |
|----------------------------|---|
| Catalog No. | RHP04701 |
| Clone ID | R4C77 |
| Host species | Mouse |
| Tested applications | IHC: 1:100-1:200 |
| Species reactivity | Human |
| Form | Liquid |
| Storage buffer | 0.01M PBS, pH 7.4, 0.05% Sodium Azide. |
| Concentration | 1 mg/ml |
| Purity | >95% as determined by SDS-PAGE. |
| Clonality | Monoclonal |
| Isotype | IgG1 |
| Applications | IHC |
| Target | ZNF645, E3 ubiquitin-protein ligase CBLL2, c-Cbl-like protein 2, RING-type E3 ubiquitin transferase ZNF645, Zinc finger protein 645, CBLL2, Cbl proto-oncogene-like protein 2 |
| Purification | Protein A/G purified from cell culture supernatant. |
| Endotoxin level | Please contact with the lab for this information. |
| Accession | Q8N7E2 |

Stability and Storage

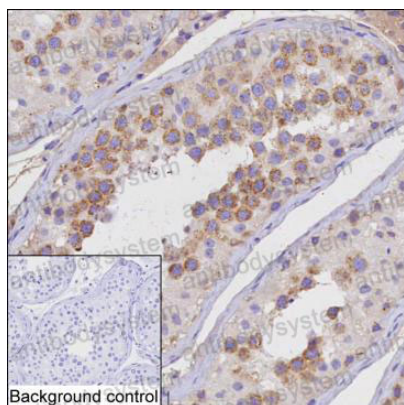
Use a manual defrost freezer and avoid repeated freeze-thaw cycles.

Store at 4°C short term (1-2 weeks). Store at -20°C 12 months. Store at -80°C long term.

Note

For research use only.

Data Image



Immunohistochemical

IHC-P analysis of testis tissue by CBLL2 antibody (RHP04701). IHC-P was performed using sections of the formalin-fixed paraffin-embedded testis tissue; Result: Cells in seminiferous duct are positively stained at the cytoplasm.