

Anti-SH3RF1 Antibody (R4C60)

Summary

Catalog No.	RHP03501
Clone ID	R4C60
Host species	Mouse
Tested applications	IP: 1:100-1:200, WB: 1:500-1:1000
Species reactivity	Human, Mouse
Form	Liquid
Storage buffer	0.01M PBS, pH 7.4, 0.05% Sodium Azide.
Concentration	1 mg/ml
Purity	>95% as determined by SDS-PAGE.
Clonality	Monoclonal
Isotype	IgG2a
Applications	IP, WB
Target	SH3 multiple domains protein 2, SH3 domain-containing RING finger protein 1, POSH, RING-type E3 ubiquitin transferase SH3RF1, Plenty of SH3s, Protein POSH, E3 ubiquitin-protein ligase SH3RF1, KIAA1494, POSH1, RNF142, SH3RF1, SH3MD2, RING finger protein 142
Purification	Protein A/G purified from cell culture supernatant.
Endotoxin level	Please contact with the lab for this information.
Accession	Q7Z6J0

Stability and Storage

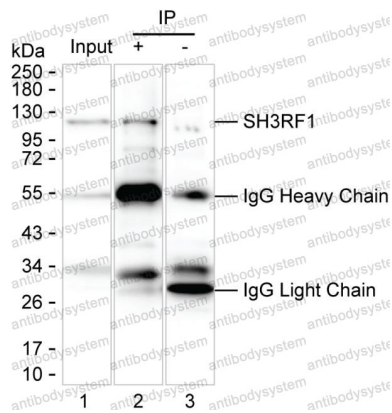
Use a manual defrost freezer and avoid repeated freeze-thaw cycles.

Store at 4°C short term (1-2 weeks). Store at -20°C 12 months. Store at -80°C long term.

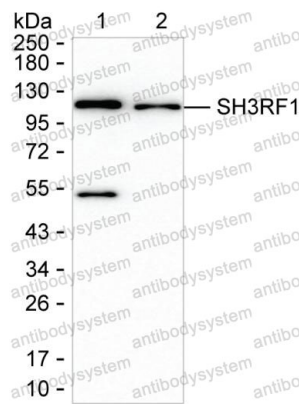
Note

For research use only.

Data Image



Immunoprecipitation



Western blot

Lane 1: Mouse brain tissue lysate ; Lane 2: SH3RF1 immunoprecipitated from mouse brain tissue lysate by RHP03501; Lane 3: The same as Lane 2 but use IgG isotype control antibody ; Result: RHP03501 can immunoprecipitate SH3RF1;

Western blot analysis using SH3RF1 mouse mAb against HeLa lysate and mouse brain tissue lysate