

Anti-PSMD1 Antibody (R4C46)

Summary

Catalog No.	RHP02302
Clone ID	R4C46
Host species	Mouse
Tested applications	IP: 1:100-1:200, WB: 1:500-1:1000
Species reactivity	Human
Form	Liquid
Storage buffer	0.01M PBS, pH 7.4, 0.05% Sodium Azide.
Concentration	1 mg/ml
Purity	>95% as determined by SDS-PAGE.
Clonality	Monoclonal
Isotype	IgG1
Applications	IP, WB
Target	26S proteasome non-ATPase regulatory subunit 1, 26S proteasome subunit p112, PSMD1, 26S proteasome regulatory subunit RPN2, 26S proteasome regulatory subunit S1
Purification	Protein A/G purified from cell culture supernatant.
Endotoxin level	Please contact with the lab for this information.
Accession	Q99460

Stability and Storage

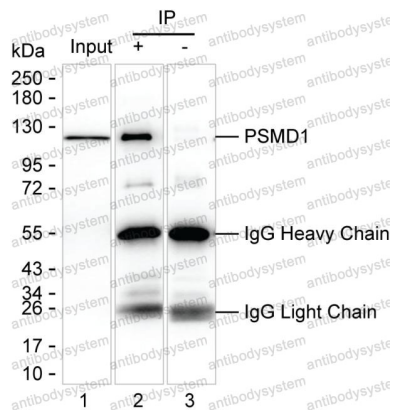
Use a manual defrost freezer and avoid repeated freeze-thaw cycles.

Store at 4°C short term (1-2 weeks). Store at -20°C 12 months. Store at -80°C long term.

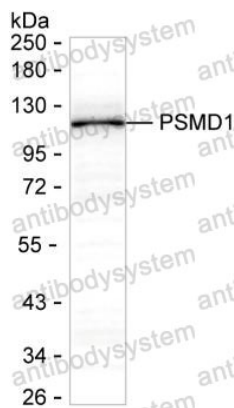
Note

For research use only.

Data Image



Immunoprecipitation



Western blot

Lane 1: Hep G2 lysate ; Lane 2: PSMD1 immunoprecipitated from Hep G2 lysate by RHP02302; Lane 3: The same as Lane 2 but use IgG isotype control antibody ; Result: RHP02302 can immunoprecipitate PSMD1;

Western blot analysis using PSMD1 mouse mAb against A-431 lysate