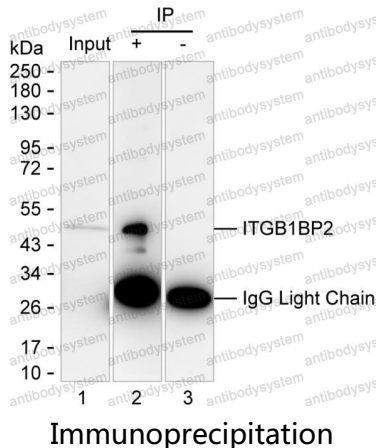


Anti-ITGB1BP2 Antibody (R4C34)

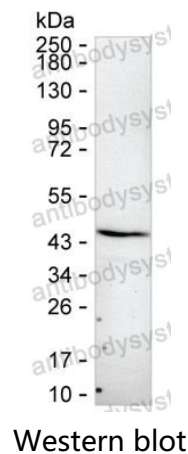
Summary

Catalog No.	RHP01201
Clone ID	R4C34
Host species	Mouse
Tested applications	IP: 1:100-1:200, WB: 1:500-1:1000
Species reactivity	Human, Rat
Form	Liquid
Storage buffer	0.01M PBS, pH 7.4, 0.05% Sodium Azide.
Concentration	1 mg/ml
Purity	>95% as determined by SDS-PAGE.
Clonality	Monoclonal
Isotype	IgG1
Applications	IP, WB
Target	Melusin, ITGB1BP2, Integrin beta-1-binding protein 2
Purification	Protein A/G purified from cell culture supernatant.
Endotoxin level	Please contact with the lab for this information.
Accession	Q9UKP3
Stability and Storage	Use a manual defrost freezer and avoid repeated freeze-thaw cycles. Store at 4°C short term (1-2 weeks). Store at -20°C 12 months. Store at -80°C long term.
Note	For research use only.

Data Image



Lane 1: Rat skeletal muscle tissue lysate; Lane 2: ITGB1BP2 immunoprecipitated from rat skeletal muscle tissue lysate by RHP01201; Lane 3: The same as Lane 2 but use IgG isotype control antibody; Result: RHP01201 can immunoprecipitate ITGB1BP2;



Western blot analysis using ITGB1BP2 mouse mAb against rat skeletal muscle lysate