

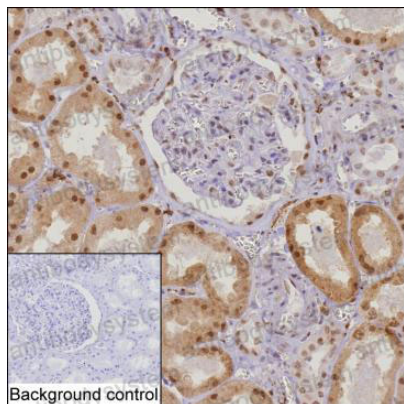
# Anti-C7orf50 Antibody (R4C32)

## Summary

---

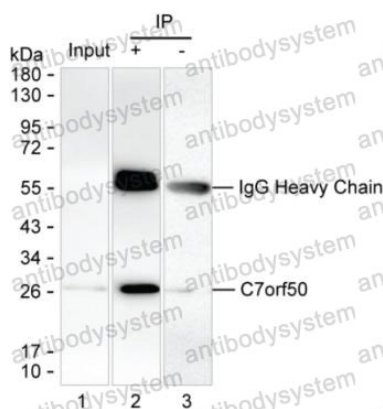
<b>Catalog No.</b>	RHP01001
<b>Clone ID</b>	R4C32
<b>Host species</b>	Mouse
<b>Tested applications</b>	IHC: 1:500-1:1000, IP: 1:100-1:200, WB: 1:500-1:1000
<b>Species reactivity</b>	Human
<b>Form</b>	Liquid
<b>Storage buffer</b>	0.01M PBS, pH 7.4, 0.05% Sodium Azide.
<b>Concentration</b>	1 mg/ml
<b>Purity</b>	>95% as determined by SDS-PAGE.
<b>Clonality</b>	Monoclonal
<b>Isotype</b>	IgG2b
<b>Applications</b>	IHC, IP, WB
<b>Target</b>	C7orf50, Uncharacterized protein C7orf50
<b>Purification</b>	Protein A/G purified from cell culture supernatant.
<b>Endotoxin level</b>	Please contact with the lab for this information.
<b>Accession</b>	Q9BRJ6
<b>Stability and Storage</b>	Use a manual defrost freezer and avoid repeated freeze-thaw cycles. Store at 4°C short term (1-2 weeks). Store at -20°C 12 months. Store at -80°C long term.
<b>Note</b>	For research use only.

## Data Image



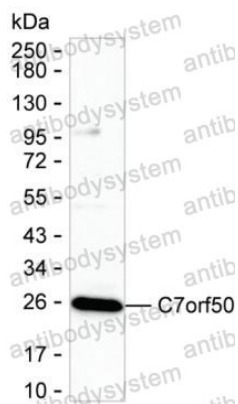
Immunohistochemical

IHC-P analysis of kidney tissue by C7orf50 antibody (RHP01001). IHC-P was performed using sections of the formalin-fixed paraffin-embedded kidney tissue; Result: Cells in tubules and cells in glomeruli are positively stained at the nuclei.



Immunoprecipitation

Lane 1: MCF7 lysate ; Lane 2: C7orf50 immunoprecipitated from MCF7 lysate by RHP01001; Lane 3: The same as Lane 2 but use IgG isotype control antibody ; Result: RHP01001 can immunoprecipitate C7orf50;



Western blot

Western blot analysis using C7orf50 mouse mAb against MCF7 lysate