

Anti-GBP6 Antibody (R4C28)

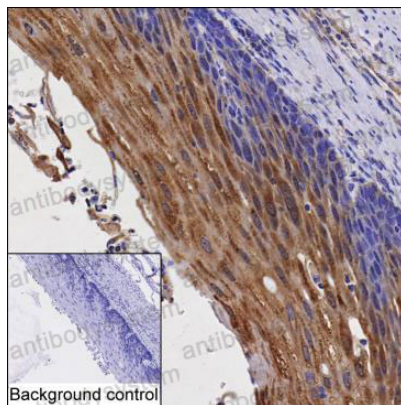
Summary

Catalog No.	RHP00601
Clone ID	R4C28
Host species	Mouse
Tested applications	IHC: 1:50-1:200, IP: 1:100-1:200, WB: 1:500-1:1000
Species reactivity	Human
Form	Liquid
Storage buffer	0.01M PBS, pH 7.4, 0.05% Sodium Azide.
Concentration	1 mg/ml
Purity	>95% as determined by SDS-PAGE.
Clonality	Monoclonal
Isotype	IgG2a
Applications	IHC, IP, WB
Target	Guanylate-binding protein 6, GBP6, GBP-6, Guanine nucleotide-binding protein 6, GTP-binding protein 6
Purification	Protein A/G purified from cell culture supernatant.
Endotoxin level	Please contact with the lab for this information.
Accession	Q6ZN66
Stability and Storage	Use a manual defrost freezer and avoid repeated freeze-thaw cycles. Store at 4°C short term (1-2 weeks). Store at -20°C 12 months. Store at -80°C long term.

Note

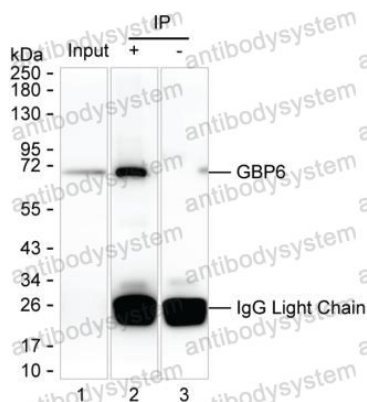
For research use only.

Data Image



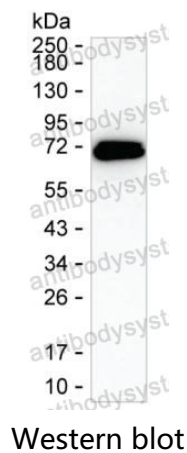
Immunohistochemical

IHC-P analysis of esophagus tissue by GBP6 antibody (RHP00601). IHC-P was performed using sections of the formalin-fixed paraffin-embedded esophagus tissue; Result: Squamous epithelial cells are positively stained at the cytoplasm.



Immunoprecipitation

Lane 1: Tonsil tissue lysate ; Lane 2: GBP6 immunoprecipitated from tonsil tissue lysate by RHP00601; Lane 3: The same as Lane 2 but use IgG isotype control antibody ; Result: RHP00601 can immunoprecipitate GBP6;



Western blot analysis using GBP6 mouse mAb
against tonsil tissue lysate