

Anti-NELFA Antibody (R4C25)

Summary

Catalog No.	RHP00401
Clone ID	R4C25
Host species	Mouse
Tested applications	ELISA: 1:10000, FCM: 1:200-1:400, IF: 1:200-1:1000, IHC: 1:200-1:1000, WB: 1:500-1:2000
Species reactivity	Human, Rat
Form	Liquid
Storage buffer	0.01M PBS, pH 7.4, 0.05% Sodium Azide.
Concentration	1 mg/ml
Purity	>95% as determined by SDS-PAGE.
Clonality	Monoclonal
Isotype	IgG2b
Applications	ELISA, FCM, IF, IHC, WB
Target	Negative elongation factor A, Wolf-Hirschhorn syndrome candidate 2 protein, NELFA, NELF-A, WHSC2
Purification	Protein A/G purified from cell culture supernatant.
Endotoxin level	Please contact with the lab for this information.
Accession	Q9H3P2

Stability and Storage

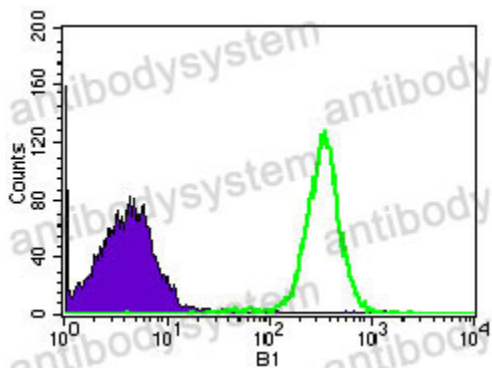
Use a manual defrost freezer and avoid repeated freeze-thaw cycles.

Store at 4°C short term (1-2 weeks). Store at -20°C 12 months. Store at -80°C long term.

Note

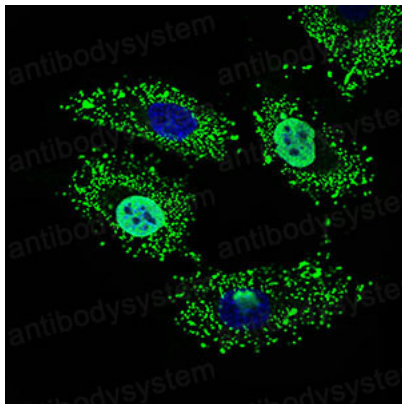
For research use only.

Data Image



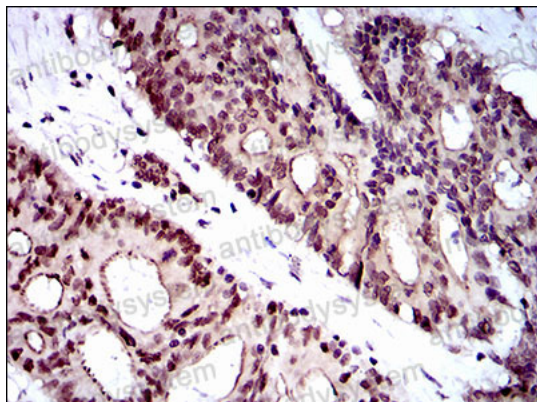
Flow Cytometry

Flow cytometric analysis of HEK293 cells using WHSC2 mouse mAb (green) and negative control (purple).



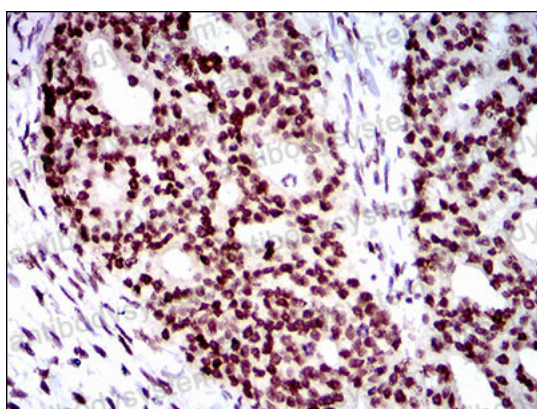
Immunofluorescence

Immunofluorescence analysis of HeLa cells using WHSC2 mouse mAb (green). Blue: DAA05 fluorescent DNA dye.



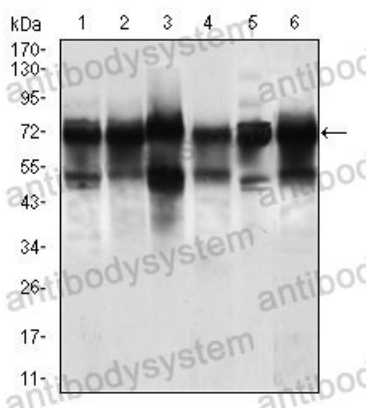
Immunohistochemical

Immunohistochemical analysis of oaraffn-embedded colon cancer tissues using WHSC2 mouse mAb with DAB staining



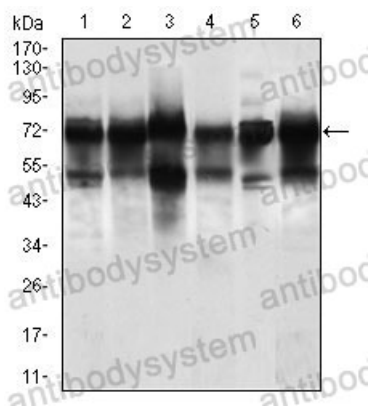
Immunohistochemical

Immunohistochemical analysis of paraffn-embedded ovarian cancer tissues using WHSC2 mouse mAb with DAB staining



Western blot

Western blot analysis using wwsC2 mouse mAb against Jurkat(1), HeLa (2), HEK293 (3), 4549 (51SPC-A-1 (6) cell lysate, and Rat brain4) fissue lysate.



Western blot

Western blot analysis using wsC2 mouse mAb against Jurkat(1), HeLa (2), HEK293 (3), 4549 (51SPC-A-1 (6) cell lysate, and Rat brain(4) tissue lysate.