

# Anti-SLC45A3 Antibody (R4C17)

## Summary

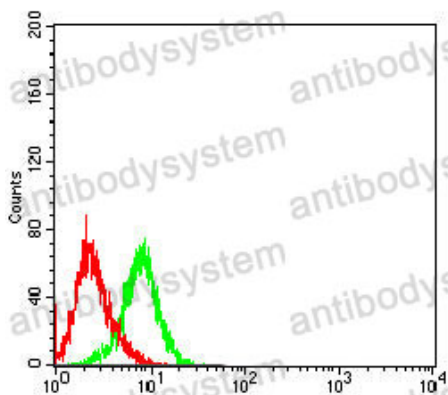
---

<b>Catalog No.</b>	RHN99601
<b>Clone ID</b>	R4C17
<b>Host species</b>	Mouse
<b>Tested applications</b>	ELISA: 1:10000, FCM: 1:200-1:400, WB: 1:500-1:2000
<b>Species reactivity</b>	Human
<b>Form</b>	Liquid
<b>Storage buffer</b>	0.01M PBS, pH 7.4, 0.05% Sodium Azide.
<b>Concentration</b>	1 mg/ml
<b>Purity</b>	>95% as determined by SDS-PAGE.
<b>Clonality</b>	Monoclonal
<b>Isotype</b>	IgG2b
<b>Applications</b>	ELISA, FCM, WB
<b>Target</b>	Solute carrier family 45 member 3, SLC45A3, Prostate cancer-associated protein 6, Prostein, PRST, PCANAP6
<b>Purification</b>	Protein A/G purified from cell culture supernatant.
<b>Endotoxin level</b>	Please contact with the lab for this information.
<b>Accession</b>	Q96JT2
<b>Stability and Storage</b>	Use a manual defrost freezer and avoid repeated freeze-thaw cycles. Store at 4°C short term (1-2 weeks). Store at -20°C 12 months. Store at -80°C long term.

**Note**

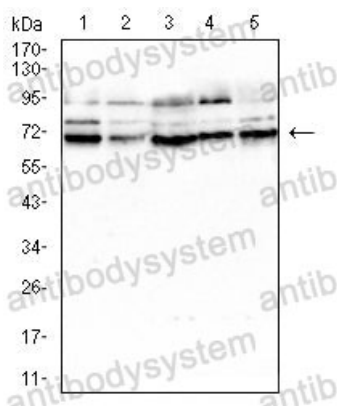
For research use only.

## Data Image



Flow Cytometry

Flow cytometric analysis of PC-3 cells using SLC45A3 mouse mAb (green) and negative control (red).



Western blot

Western blot analysis using SLC45A3 mouse mAb against LNCap (1), PC-3 (2), HepG2 (3), SMMC-7721 (4), and DU145 (5) cell lysate.