

Anti-MAP4K1 Antibody (R4C16)

Summary

Catalog No.	RHN99501
Clone ID	R4C16
Host species	Mouse
Tested applications	ELISA: 1:10000, FCM: 1:200-1:400, IHC: 1:200-1:1000, WB: 1:500-1:2000
Species reactivity	Human, Mouse, Rat, Monkey
Form	Liquid
Storage buffer	0.01M PBS, pH 7.4, 0.05% Sodium Azide.
Concentration	1 mg/ml
Purity	>95% as determined by SDS-PAGE.
Clonality	Monoclonal
Isotype	IgG1
Applications	ELISA, FCM, IHC, WB
Target	Mitogen-activated protein kinase kinase kinase kinase 1, MAP4K1, MAPK/ERK kinase kinase kinase 1, HPK1, MEK kinase kinase 1, MEKKK 1, Hematopoietic progenitor kinase
Purification	Protein A/G purified from cell culture supernatant.
Endotoxin level	Please contact with the lab for this information.
Accession	Q92918

Stability and Storage

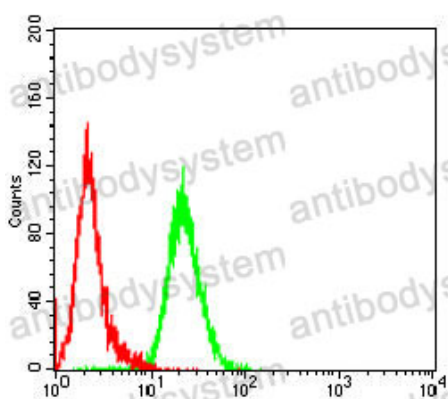
Use a manual defrost freezer and avoid repeated freeze-thaw cycles.

Store at 4°C short term (1-2 weeks). Store at -20°C 12 months. Store at -80°C long term.

Note

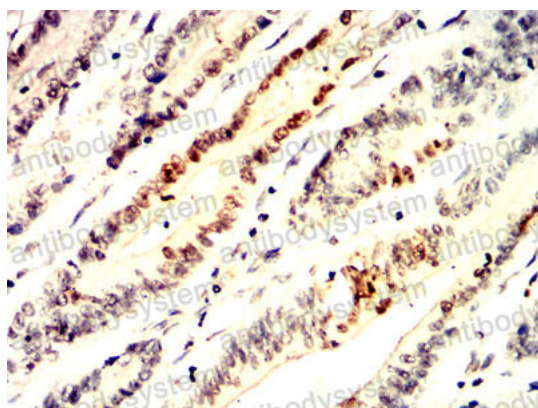
For research use only.

Data Image



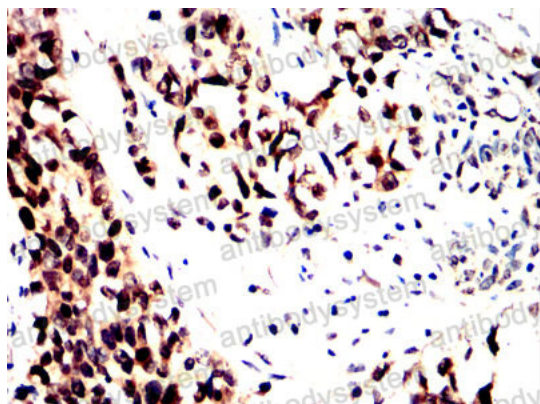
Flow Cytometry

Flow cytometric analysis of Jurkat cells using MAP4K1 mouse mAb (green) and negative control (red).



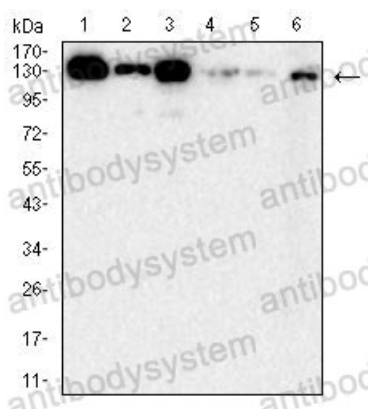
Immunohistochemical

Immunohistochemical analysis of paraffin-embedded human colon cancer tissues using MAP4K1 mouse mAb with DAB staining.



Immunohistochemical

Immunohistochemical analysis of paraffin-embedded human bladder cancer tissues using MAP4K1 mouse mAb with DAB staining.



Western blot

Western blot analysis using MAP4K1 mouse mAb against Jurkat (1), A549 (2), mouse kidney (3), COS7 (4), C6 (5) and NIH/3T3 (6) cell lysate.