

Anti-PEG10 Antibody (R4A76)

Summary

Catalog No.	RHN91102
Clone ID	R4A76
Host species	Mouse
Tested applications	IHC: 1:200-1:1000, WB: 1:500-1:2000
Species reactivity	Human
Form	Liquid
Storage buffer	0.01M PBS, pH 7.4, 0.05% Sodium Azide.
Concentration	1 mg/ml
Purity	>95% as determined by SDS-PAGE.
Clonality	Monoclonal
Isotype	IgG1
Applications	IHC, WB
Target	Retrotransposon gag domain-containing protein 3, EDR, RGAG3, Paternally expressed gene 10 protein, Retrotransposon-derived gag-like polyprotein, Ty3/Gypsy-like protein, KIAA1051, MAR2, PEG10, Retrotransposon-derived protein PEG10, MEF3-like protein 1, Embryonal carcinoma differentiation-regulated protein, Mammalian retrotransposon-derived protein 2, MEF3L1, MART2, Myelin expression factor 3-like protein 1
Purification	Protein A/G purified from cell culture supernatant.
Endotoxin level	Please contact with the lab for this information.

Accession

Q86TG7

Stability and Storage

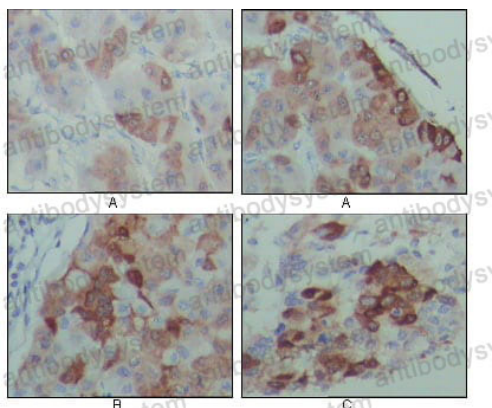
Use a manual defrost freezer and avoid repeated freeze-thaw cycles.

Store at 4°C short term (1-2 weeks). Store at -20°C 12 months. Store at -80°C long term.

Note

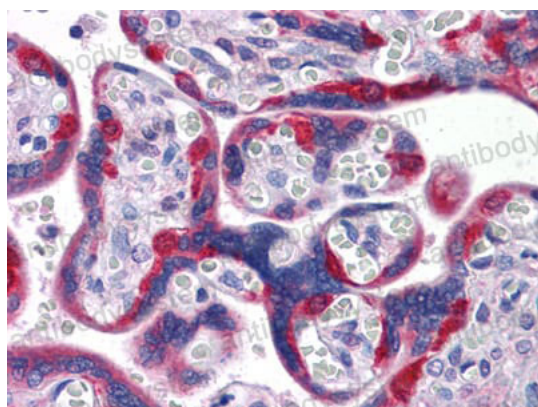
For research use only.

Data Image



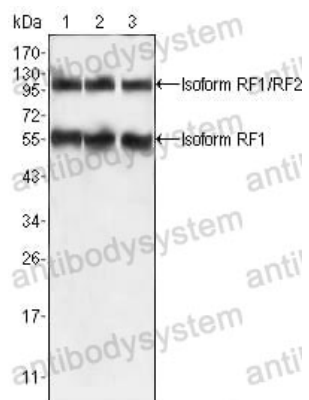
Immunohistochemical

Immunohistochemical analysis of paraffin-embedded human hepatocarcinoma (A), breast carcinoma (B) and lung cancer tissues (C), showing cytoplasmic localization with DAB staining using PEG10 mouse mAb.



Immunohistochemical

Immunohistochemical analysis of paraffin-embedded human Placenta tissues using PEG10 mouse mAb



Western blot

Western blot analysis using PEG10 mouse mAb against HepG2 (1), SMMC-7721 (2) and A549 (3) cell lysate.