

Recombinant Human CD40/TNFRSF5 Protein, C-His

Summary

Catalog No.	EHD68901
Alternative Names	Tumor necrosis factor receptor superfamily member 5, B-cell surface antigen CD40, Bp50, CD40L receptor, TNFRSF5, CDw40, CD40
Form	Lyophilized
Storage buffer	Lyophilized from a solution in PBS pH 7.4, 1mM EDTA, 4% Trehalose, 1% Mannitol.
Purity	>90% as determined by SDS-PAGE.
Applications	ELISA, Immunogen, SDS-PAGE, WB, Bioactivity testing in progress
Endotoxin level	Please contact with the lab for this information.
Expression system	Mammalian Cells
Accession	P25942
Protein length	Met1-Arg193
Nature	Recombinant
Predicted molecular weight	22.32 kDa
Stability and Storage	Use a manual defrost freezer and avoid repeated freeze thaw cycles. Store at 2 to 8°C for frequent use. Store at -20 to -80°C for twelve months from the date of receipt.
Reconstitution	Reconstitute in sterile water for a stock solution. A copy of datasheet will be provided with the products, please refer to it for details.
Species	Homo sapiens (Human)

Shipping

In general, proteins are provided as lyophilized powder/frozen liquid. They are shipped out with dry ice/blue ice unless customers require otherwise.

Note

For research use only.

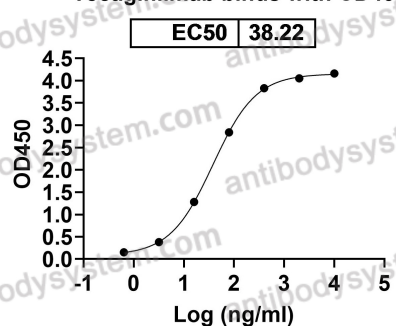
Data Image



SDS-PAGE

SDS PAGE for recombinant Human CD40 / TNFRSF5

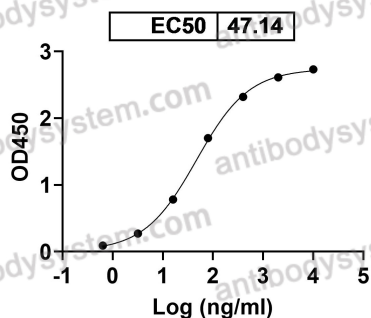
Tecaginlimab binds with CD40



Bioactivity

Detects Tecaginlimab in indirect ELISAs.

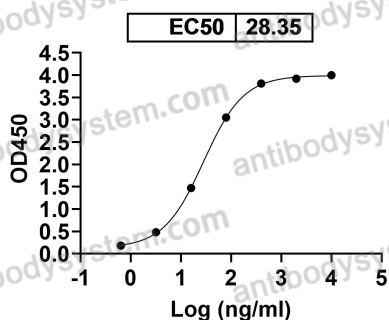
Anti-Human CD40/TNFRSF5 Antibody (SAA1387)
binds with CD40



Bioactivity

Detects Human CD40/TNFRSF5 Antibody (SAA1387) in indirect ELISAs.

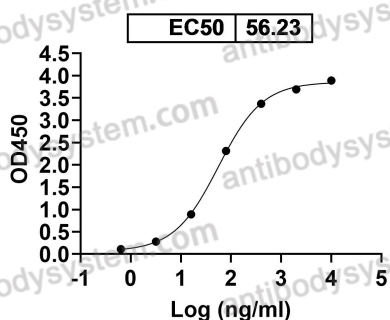
Anti-Human CD40/TNFRSF5 Antibody (lv0136)
binds with CD40



Bioactivity

Detects Human CD40/TNFRSF5 Antibody in indirect ELISAs.

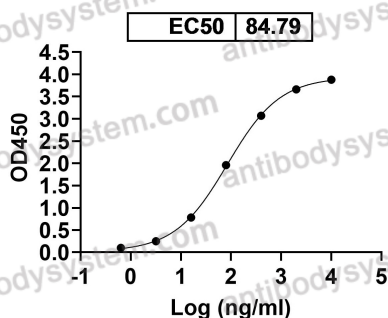
Bleselumab binds with CD40



Bioactivity

Detects Bleselumab in indirect ELISAs.

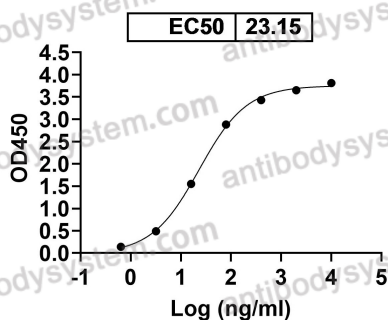
Selicrelumab binds with CD40



Bioactivity

Detects Selicrelumab in indirect ELISAs.

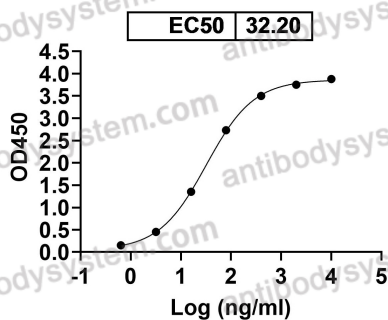
Mitazalimab binds with CD40



Bioactivity

Detects Mitazalimab in indirect ELISAs.

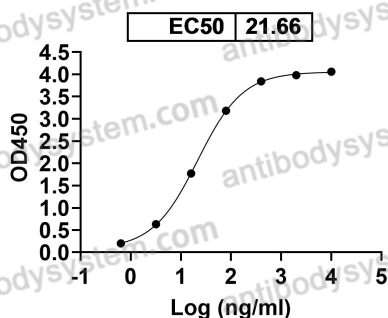
Dacetuzumab binds with CD40



Bioactivity

Detects Dacetuzumab in indirect ELISAs.

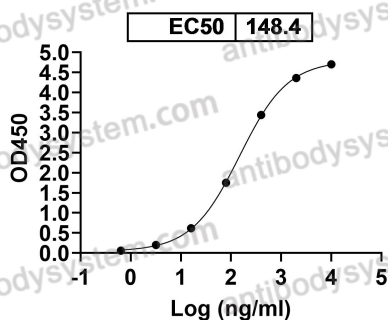
Sotigalimab binds with CD40



Bioactivity

Detects Sotigalimab in indirect ELISAs.

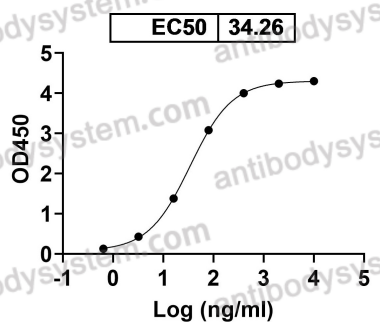
Ravagalimab binds with CD40



Bioactivity

Detects Ravagalimab in indirect ELISAs.

Lucatumumab binds with CD40



Bioactivity

Detects Lucatumumab in indirect ELISAs.