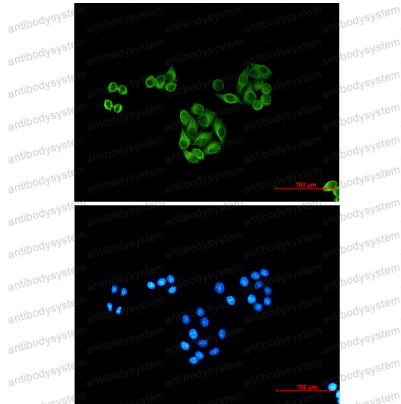


Anti-TUBB1/beta I Tubulin Antibody (R3W54)

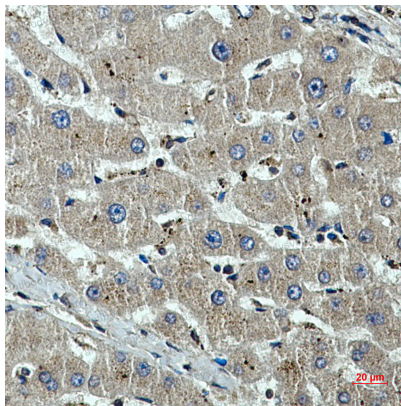
Summary

| | |
|------------------------------|---|
| Catalog No. | RHJ57302 |
| Clone ID | R3W54 |
| Host species | Mouse |
| Tested applications | IF: 1:50-1:200, IHC: 1:50-1:100, WB: 1:500-1:1000 |
| Species reactivity | Human, Mouse, Rat |
| Form | Liquid |
| Storage buffer | 0.01M PBS, pH 7.4, 0.5% BSA, 0.05% Sodium Azide and 50% Glycerol. |
| Concentration | 1 mg/ml |
| Purity | >95% as determined by SDS-PAGE. |
| Clonality | Monoclonal |
| Isotype | IgG1 |
| Applications | IF, IHC, WB |
| Target | TUBB1, Tubulin beta-1 chain |
| Purification | Protein A/G purified from cell culture supernatant. |
| Endotoxin level | Please contact with the lab for this information. |
| Accession | Q9H4B7 |
| Stability and Storage | Use a manual defrost freezer and avoid repeated freeze-thaw cycles. Store at 4°C short term (1-2 weeks). Store at -20°C 12 months. Store at -80°C long term. |
| Note | For research use only. |

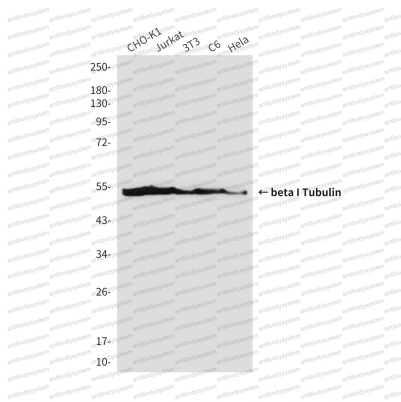
Data Image



Immunofluorescence



Immunohistochemical

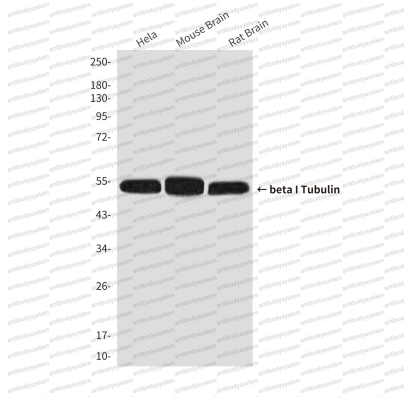


Western blot

Immunocytochemistry analysis of beta I Tubulin (green) in Hela using beta I Tubulin antibody, and DAPI(blue)

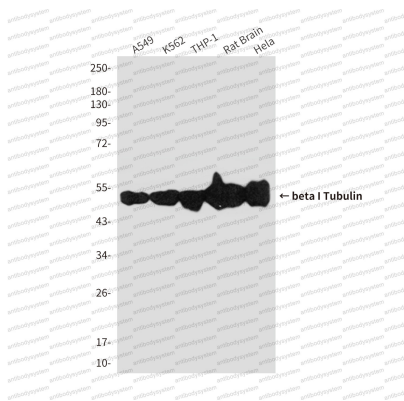
Immunohistochemistry analysis of paraffin-embedded beta I Tubulin in Human liver cancer using beta I Tubulin antibody. High-pressure and temperature Sodium Citrate pH 6.0 was used for antigen retrieval.

Western blot analysis of beta I Tubulin in CHO-K1, Jurkat, 3T3, C6 and Hela lysates using beta I Tubulin antibody



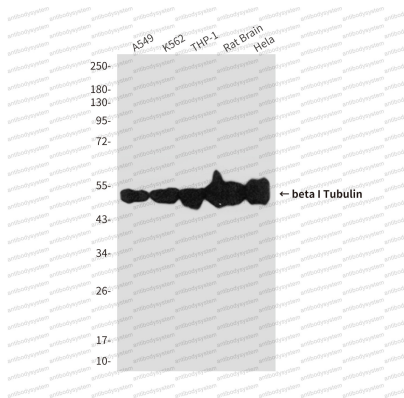
Western blot

Western blot analysis of beta I Tubulin in HeLa, mouse Brain Tissue, rat Brain Tissue lysates using beta I Tubulin antibody



Western blot

Western blot analysis of beta I Tubulin in A549, K562, THP-1, rat Brain, HeLa lysates using beta I Tubulin antibody.



Western blot

Western blot analysis of beta I Tubulin in A549, K562, THP-1, rat Brain, HeLa lysates using beta I Tubulin antibody.