

Research Grade Citatuzumab

Summary

| | |
|---------------------------|---|
| Catalog No. | DHD17401 |
| Alternative Names | VB6-845, CAS: 945228-49-9 |
| Clone ID | Citatuzumab |
| Host species | Humanized |
| Species reactivity | Human |
| Form | Liquid |
| Storage buffer | 0.01M PBS, pH 7.4. |
| Concentration | 1 mg/ml |
| Purity | >95% as determined by SDS-PAGE. |
| Clonality | Monoclonal |
| Isotype | IgG1-kappa |
| Applications | Research Grade Biosimilar |
| Target | Epithelial glycoprotein 314, hEGP314, Major gastrointestinal tumor-associated protein GA733-2, EGP314, TACSTD1, Adenocarcinoma-associated antigen, TROP1, EPCAM, Epithelial glycoprotein, KS 1/4 antigen, Tumor-associated calcium signal transducer 1, M4S1, CD326, Ep-CAM, EGP, Epithelial cell adhesion molecule, M1S2, KSA, Cell surface glycoprotein Trop-1, GA733-2, Epithelial cell surface antigen, MIC18 |
| Purification | Protein A/G purified from cell culture supernatant. |
| Endotoxin level | Please contact with the lab for this information. |
| Expression system | Mammalian Cells |

Recombinant Proteins & Antibodies

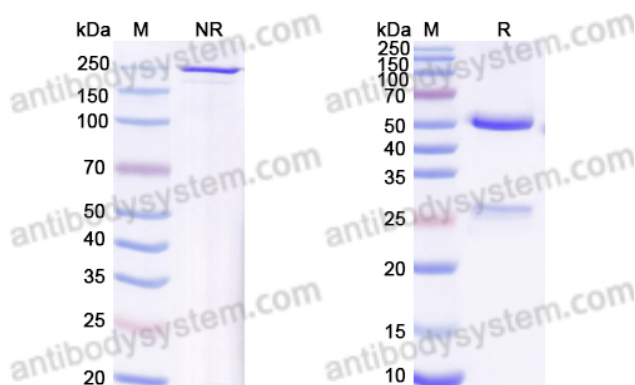
Accession P16422

Stability and Storage Use a manual defrost freezer and avoid repeated freeze-thaw cycles.

Store at 4°C short term (1-2 weeks). Store at -20°C 12 months. Store at -80°C long term.

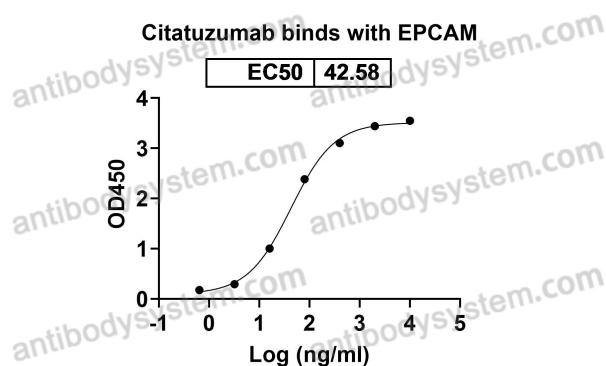
Note For research use only. Not suitable for clinical or therapeutic use.

Data Image



SDS PAGE for Citatuzumab Bogatox

SDS-PAGE



Detects CD326/EPCAM in indirect ELISAs.

Bioactivity