

Anti-CBX2 Antibody (R3T32)

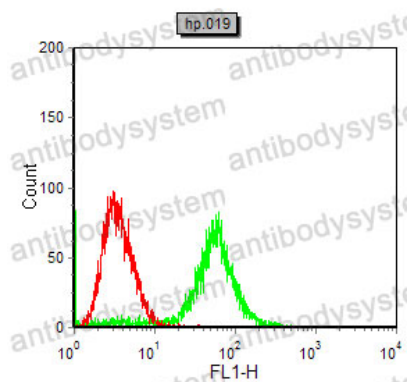
Summary

Catalog No.	RHG90002
Clone ID	R3T32
Host species	Mouse
Tested applications	ELISA: 1:10000, FCM: 1:200-1:400, IF: 1:200-1:1000, IHC: 1:200-1:1000, WB: 1:500-1:2000
Species reactivity	Human, Mouse, Rat, Rabbit, Monkey
Form	Liquid
Storage buffer	0.01M PBS, pH 7.4, 0.05% Sodium Azide.
Concentration	1 mg/ml
Purity	>95% as determined by SDS-PAGE.
Clonality	Monoclonal
Isotype	IgG1
Applications	ELISA, FCM, IF, IHC, WB
Target	Chromobox protein homolog 2, CBX2
Purification	Protein A/G purified from cell culture supernatant.
Endotoxin level	Please contact with the lab for this information.
Accession	Q14781
Stability and Storage	Use a manual defrost freezer and avoid repeated freeze-thaw cycles. Store at 4°C short term (1-2 weeks). Store at -20°C 12 months. Store at -80°C long term.

Note

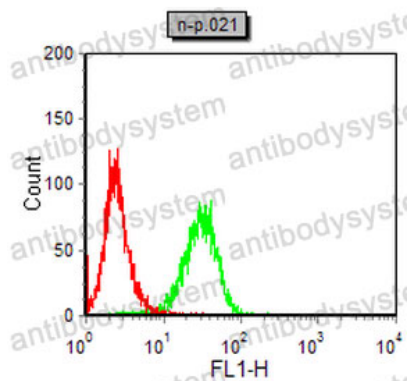
For research use only.

Data Image



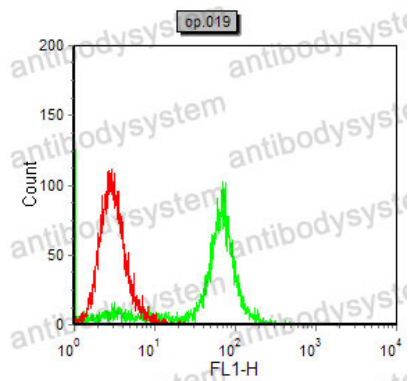
Flow Cytometry

Flow cytometric analysis of HeLa cells using CBX2 mouse mAb (green) and negative control (red).



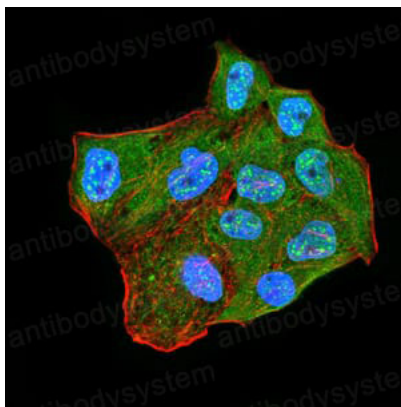
Flow Cytometry

Flow cytometric analysis of NIH/3T3 cells using CBX2 mouse mAb (green) and negative control (red).



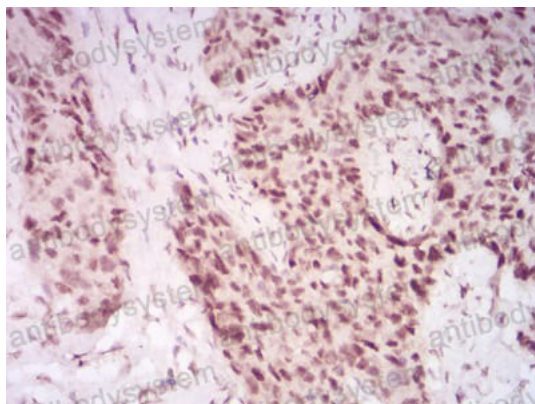
Flow Cytometry

Flow cytometric analysis of COS7 cells using CBX2 mouse mAb (green) and negative control (red).



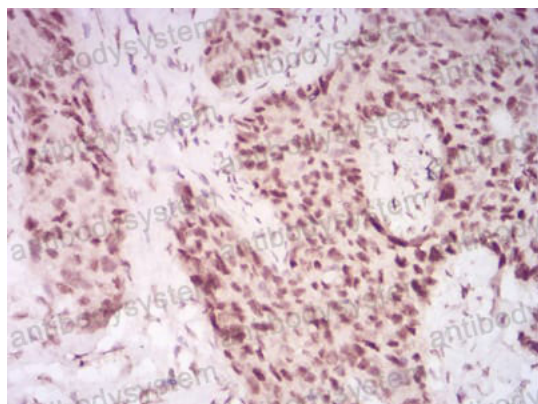
Immunofluorescence

Immunofluorescence analysis of MCF-7 cells using CBX2 mouse mAb (green). Blue: DRAQ5 fluorescent DNA dye. Red: Actin filaments have been labeled with Alexa Fluor-555 phalloidin.



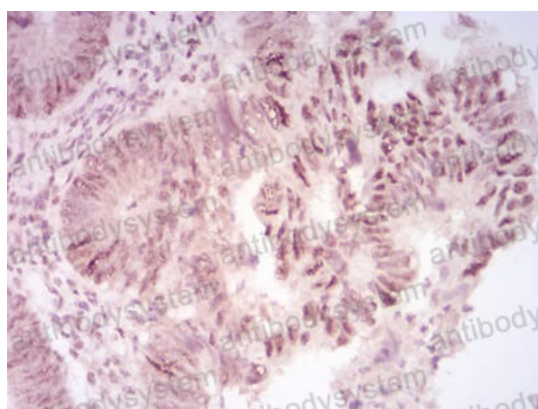
Immunohistochemical

Immunohistochemical analysis of paraffin-embedded human cervical cancer tissues using CBX2 mouse mAb with DAB staining.



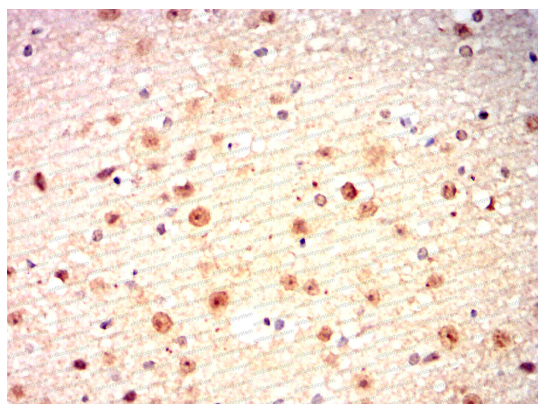
Immunohistochemical

Immunohistochemical analysis of paraffin-embedded human cervical cancer tissues using CBX2 mouse mAb with DAB staining.



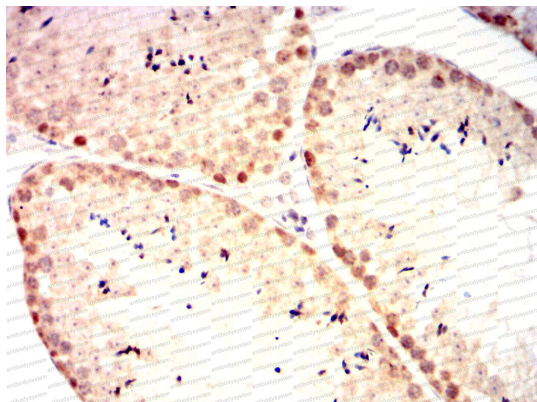
Immunohistochemical

Immunohistochemical analysis of paraffin-embedded human rectum cancer tissues using CBX2 mouse mAb with DAB staining.



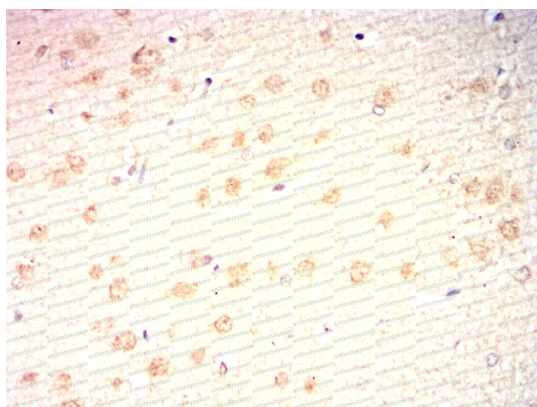
Immunohistochemical

Immunohistochemical analysis of paraffin-embedded Mouse cerebellum using CBX2 mouse mAb with DAB staining.



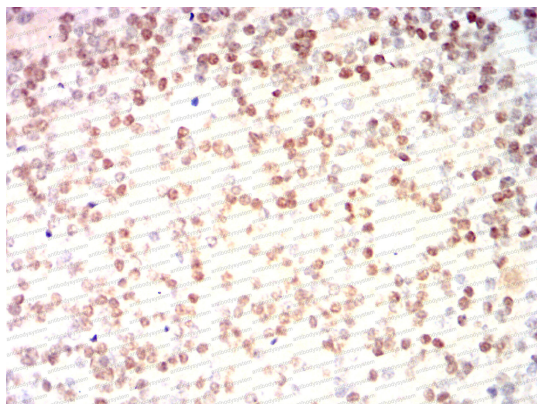
Immunohistochemical

Immunohistochemical analysis of paraffin-embedded Mouse testis using CBX2 mouse mAb with DAB staining.



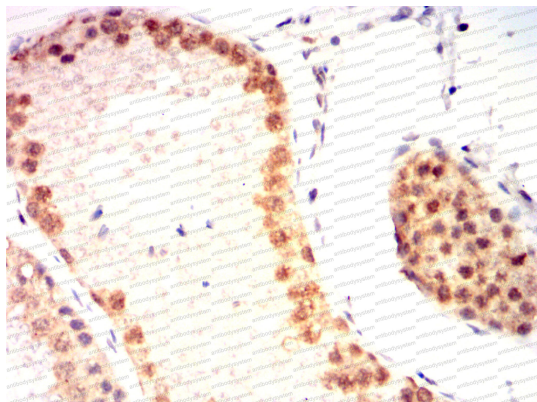
Immunohistochemical

Immunohistochemical analysis of paraffin-embedded Rat cerebellum using CBX2 mouse mAb with DAB staining.



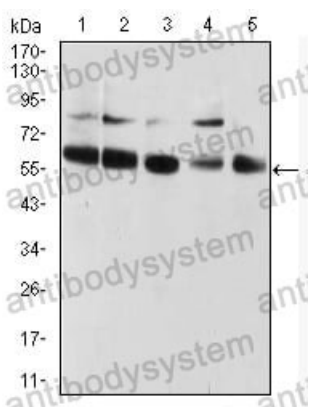
Immunohistochemical

Immunohistochemical analysis of paraffin-embedded Rabbit cerebellum using CBX2 mouse mAb with DAB staining.



Immunohistochemical analysis of paraffin-embedded Rabbit testis using CBX2 mouse mAb with DAB staining.

Immunohistochemical



Western blot

Western blot analysis using CBX2 mouse mAb against HUVEC (1), HEK293 (2), Hela (3), NIH/3T3 (4), and A431 (5) cell lysate.