

Anti-CD215/IL15RA Antibody (R3S27)

Summary

Catalog No.	RHG46403
Clone ID	R3S27
Host species	Mouse
Tested applications	ELISA: 1:10000, WB: 1:500-1:2000
Species reactivity	Human
Form	Liquid
Storage buffer	0.01M PBS, pH 7.4, 0.05% Sodium Azide.
Concentration	1 mg/ml
Purity	>95% as determined by SDS-PAGE.
Clonality	Monoclonal
Isotype	IgG1
Applications	ELISA, WB
Target	IL-15 receptor subunit alpha, sIL-15R-alpha, IL-15RA, CD215, sIL-15 receptor subunit alpha, Interleukin-15 receptor subunit alpha, IL-15R-alpha, sIL-15RA, IL15RA
Purification	Protein A/G purified from cell culture supernatant.
Endotoxin level	Please contact with the lab for this information.
Accession	Q13261

Stability and Storage

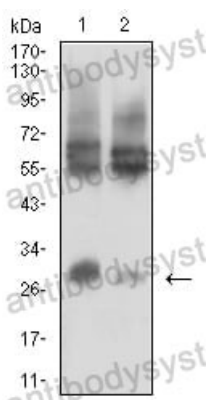
Use a manual defrost freezer and avoid repeated freeze-thaw cycles.

Store at 4°C short term (1-2 weeks). Store at -20°C 12 months. Store at -80°C long term.

Note

For research use only.

Data Image



Western blot

Western blot analysis using CD215 mouse mAb against LOVO (1) and HCT116 (2) cell lysate.