

Anti-CD47/MER6 Antibody (R3R71)

Summary

Catalog No.	RHG17603
Clone ID	R3R71
Host species	Mouse
Tested applications	ELISA: 1:10000, FCM: 1:200-1:400, IF: 1:200-1:1000, IHC: 1:200-1:1000, WB: 1:500-1:2000
Species reactivity	Human
Form	Liquid
Storage buffer	0.01M PBS, pH 7.4, 0.05% Sodium Azide.
Concentration	1 mg/ml
Purity	>95% as determined by SDS-PAGE.
Clonality	Monoclonal
Isotype	IgG2a
Applications	ELISA, FCM, IF, IHC, WB
Target	Leukocyte surface antigen CD47, CD47, Antigenic surface determinant protein OA3, IAP, Integrin-associated protein, Protein MER6, MER6
Purification	Protein A/G purified from cell culture supernatant.
Endotoxin level	Please contact with the lab for this information.
Accession	Q08722

Stability and Storage

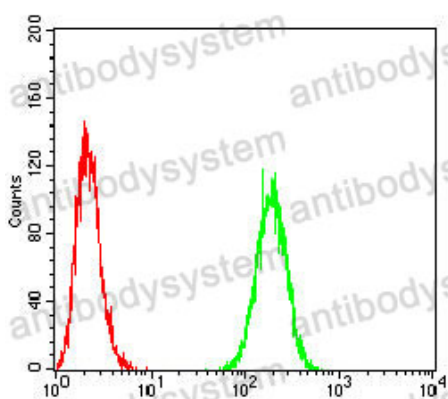
Use a manual defrost freezer and avoid repeated freeze-thaw cycles.

Store at 4°C short term (1-2 weeks). Store at -20°C 12 months. Store at -80°C long term.

Note

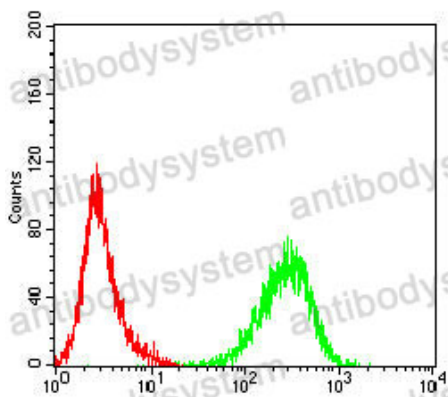
For research use only.

Data Image



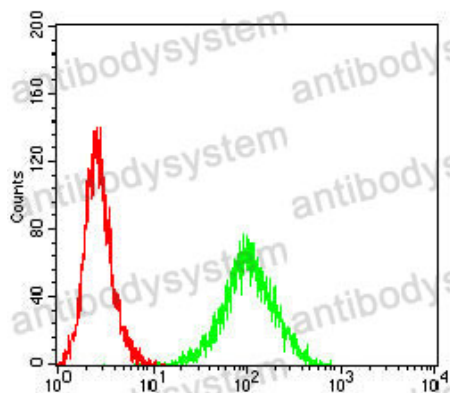
Flow Cytometry

Flow cytometric analysis of Hela cells using CD47 mouse mAb (green) and negative control (red).



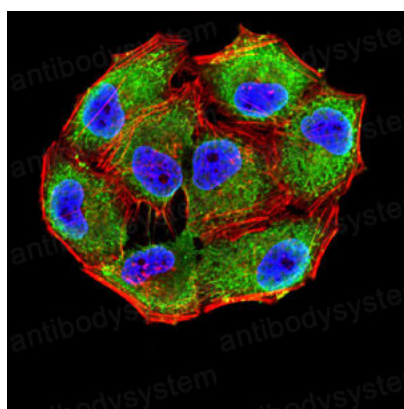
Flow Cytometry

Flow cytometric analysis of Jurkat cells using CD47 mouse mAb (green) and negative control (red).



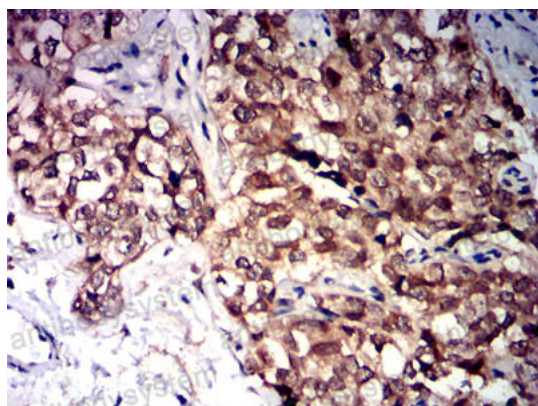
Flow Cytometry

Flow cytometric analysis of K562 cells using CD47 mouse mAb (green) and negative control (red).



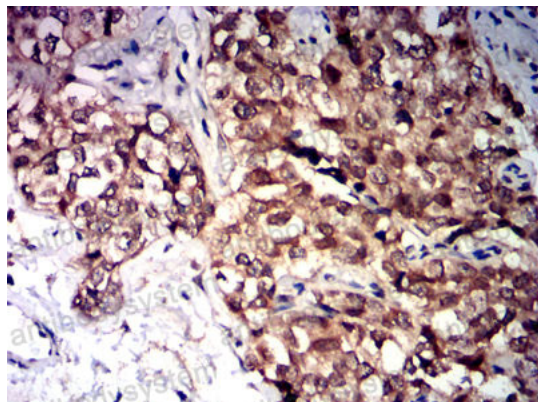
Immunofluorescence

Immunofluorescence analysis of HeLa cells using CD47 mouse mAb (green). Blue: DRAQ5 fluorescent DNA dye. Red: Actin filaments have been labeled with Alexa Fluor- 555 phalloidin.



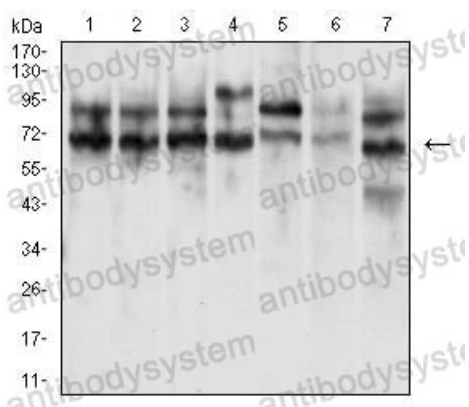
Immunohistochemical

Immunohistochemical analysis of paraffin-embedded human bladder cancer tissues using CD47 mouse mAb with DAB staining.



Immunohistochemical

Immunohistochemical analysis of paraffin-embedded human bladder cancer tissues using CD47 mouse mAb with DAB staining.



Western blot

Western blot analysis using CD47 mouse mAb against Jurkat (1), MOLT4 (2), HL-60 (3), Raji (4), Ramos (5), and HEK293 (6) cell lysate.