

# Anti-POU5F1/OCT3/OCT4 Antibody (R3Q49)

## Summary

---

|                            |  |
|----------------------------|--|
| <b>Catalog No.</b>         | RHF90005   |
| <b>Clone ID</b>            | R3Q49  |
| <b>Host species</b>        | Mouse  |
| <b>Tested applications</b> | ELISA: 1:10000, FCM: 1:200-1:400, IHC: 1:200-1:1000  |
| <b>Species reactivity</b>  | Human  |
| <b>Form</b>                | Liquid   |
| <b>Storage buffer</b>      | 0.01M PBS, pH 7.4, 0.05% Sodium Azide.   |
| <b>Concentration</b>       | 1 mg/ml  |
| <b>Purity</b>              | >95% as determined by SDS-PAGE.  |
| <b>Clonality</b>           | Monoclonal   |
| <b>Isotype</b>             | IgG1   |
| <b>Applications</b>        | ELISA, FCM, IHC  |
| <b>Target</b>              | Octamer-binding protein 4, Oct-4, OCT3, OCT4, OTF3, OTF-3, Octamer-binding transcription factor 3, POU5F1, Oct-3, POU domain, class 5, transcription factor 1, Octamer-binding protein 3 |
| <b>Purification</b>        | Protein A/G purified from cell culture supernatant.  |
| <b>Endotoxin level</b>     | Please contact with the lab for this information.  |
| <b>Accession</b>           | Q01860   |

**Stability and Storage**

Use a manual defrost freezer and avoid repeated freeze-thaw cycles.

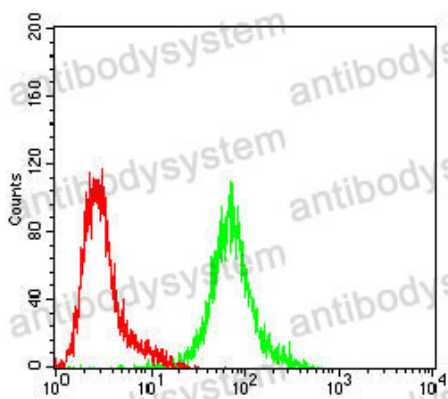
Store at 4°C short term (1-2 weeks). Store at -20°C 12 months. Store at -80°C long term.

**Note**

For research use only.

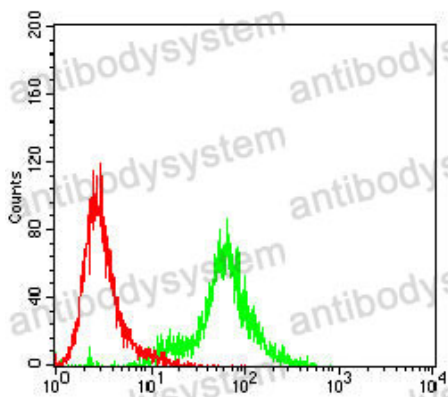
**Data Image**

---



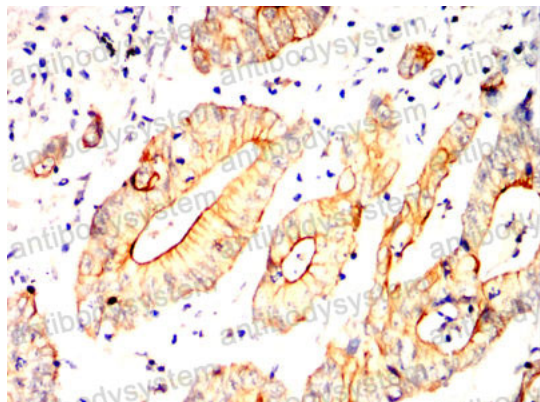
Flow Cytometry

Flow cytometric analysis of HeLa cells using POU5F1 mouse mAb (green) and negative control (red).



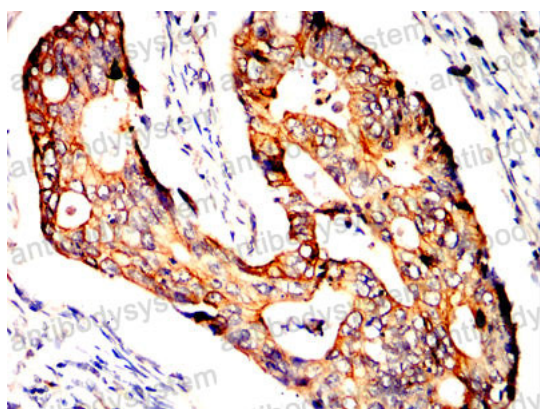
Flow Cytometry

Flow cytometric analysis of K562 cells using POU5F1 mouse mAb (green) and negative control (red).



Immunohistochemical

Immunohistochemical analysis of paraffin-embedded human colon cancer tissues using POU5F1 mouse mAb with DAB staining.



Immunohistochemical

Immunohistochemical analysis of paraffin-embedded human rectum cancer tissues using POU5F1 mouse mAb with DAB staining.