

Anti-CBX1 Antibody (R3P93)

Summary

Catalog No.	RHF75404
Clone ID	R3P93
Host species	Mouse
Tested applications	ELISA: 1:10000, FCM: 1:200-1:400, IF: 1:200-1:1000, IHC: 1:200-1:1000
Species reactivity	Human
Form	Liquid
Storage buffer	0.01M PBS, pH 7.4, 0.05% Sodium Azide.
Concentration	1 mg/ml
Purity	>95% as determined by SDS-PAGE.
Clonality	Monoclonal
Isotype	IgG1
Applications	ELISA, FCM, IF, IHC
Target	HP1Hsbeta, CBX, Chromobox protein homolog 1, Modifier 1 protein, Heterochromatin protein 1 homolog beta, HP1 beta, M31, CBX1, p25beta, Heterochromatin protein p25
Purification	Protein A/G purified from cell culture supernatant.
Endotoxin level	Please contact with the lab for this information.
Accession	P83916

Stability and Storage

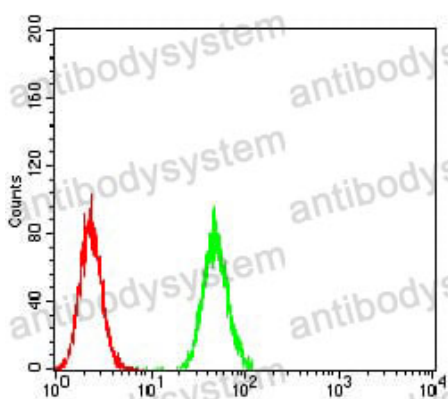
Use a manual defrost freezer and avoid repeated freeze-thaw cycles.

Store at 4°C short term (1-2 weeks). Store at -20°C 12 months. Store at -80°C long term.

Note

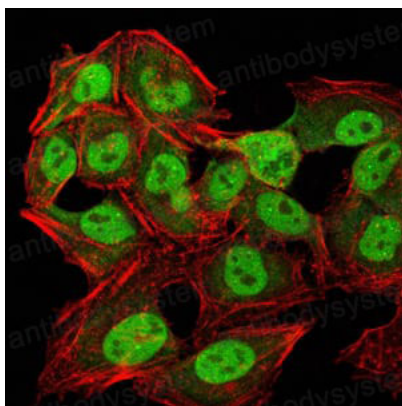
For research use only.

Data Image



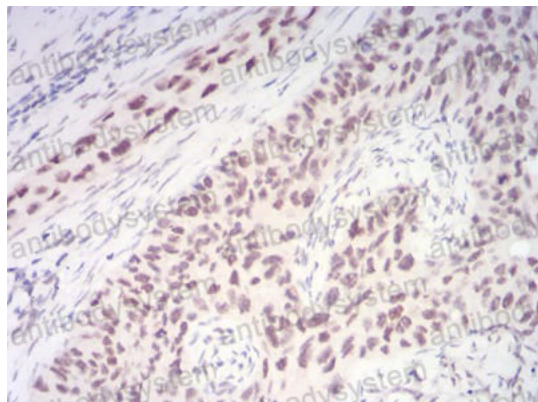
Flow Cytometry

Flow cytometric analysis of Hela cells using CBX1 mouse mAb (green) and negative control (red).

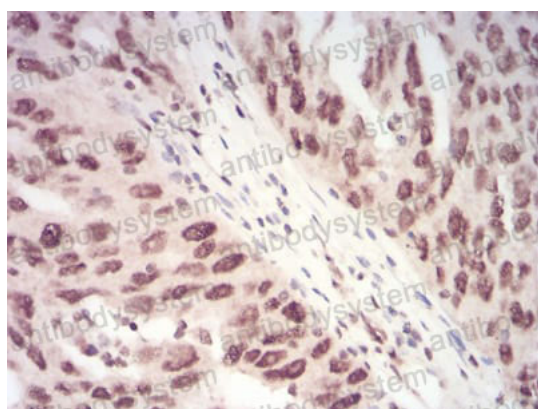


Immunofluorescence

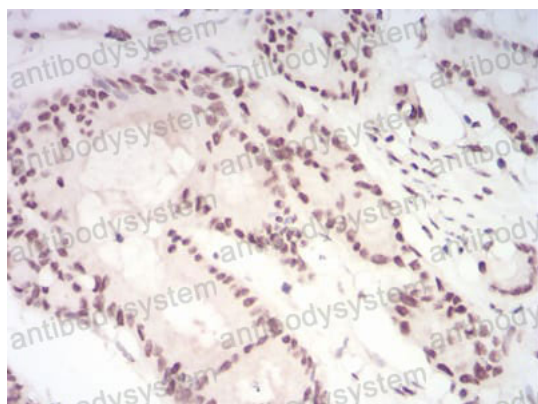
Immunofluorescence analysis of Hela cells using CBX1 mouse mAb (green). Blue: DRAQ5 fluorescent DNA dye. Red: Actin filaments have been labeled with Alexa Fluor-555 phalloidin.

**Immunohistochemical**

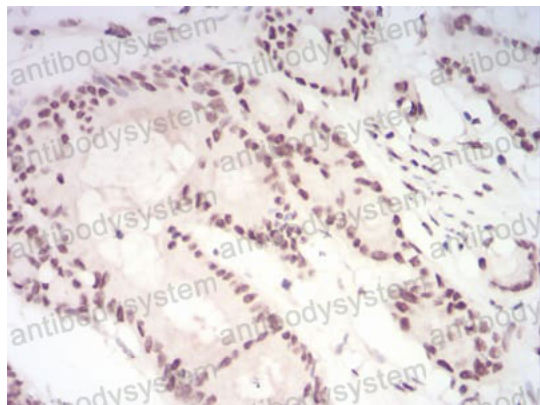
Immunohistochemical analysis of paraffin-embedded human cervical cancer tissues using CBX1 mouse mAb with DAB staining.

**Immunohistochemical**

Immunohistochemical analysis of paraffin-embedded human ovarian cancer tissues using CBX1 mouse mAb with DAB staining.

**Immunohistochemical**

Immunohistochemical analysis of paraffin-embedded human colon cancer tissues using CBX1 mouse mAb with DAB staining.



Immunohistochemical

Immunohistochemical analysis of paraffin-embedded human colon cancer tissues using CBX1 mouse mAb with DAB staining.