

Anti-SMA/ACTA2 Antibody (R3P08)

Summary

Catalog No.	RHF52709
Clone ID	R3P08
Host species	Mouse
Tested applications	ELISA: 1:10000, FCM: 1:200-1:400, IF: 1:200-1:1000, IHC: 1:50-1:100, WB: 1:500-1:2000
Species reactivity	Human, Mouse, Rat, Rabbit, Monkey
Form	Liquid
Storage buffer	0.01M PBS, pH 7.4, 0.05% Sodium Azide.
Concentration	1 mg/ml
Purity	>95% as determined by SDS-PAGE.
Clonality	Monoclonal
Isotype	IgG1
Applications	ELISA, FCM, IF, IHC, WB
Target	Alpha-actin-2, Actin, aortic smooth muscle, Cell growth-inhibiting gene 46 protein, ACTSA, ACTVS, ACTA2
Purification	Protein A/G purified from cell culture supernatant.
Endotoxin level	Please contact with the lab for this information.
Accession	P62736

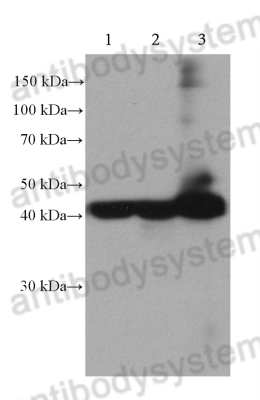
Stability and Storage

Use a manual defrost freezer and avoid repeated freeze-thaw cycles.

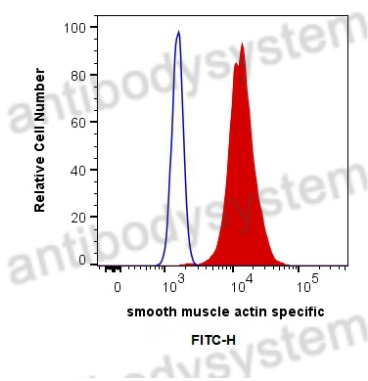
Store at 4°C short term (1-2 weeks). Store at -20°C 12 months. Store at -80°C long term.

Note

For research use only.

Data Image

Western Blot



Flow cytometric

Various lysates were subjected to SDS PAGE followed by western blot with SMA/ACTA2 antibody (RHF52709) at 1:1000.

Lane 1: rat stomach

Lane 2: rat colon

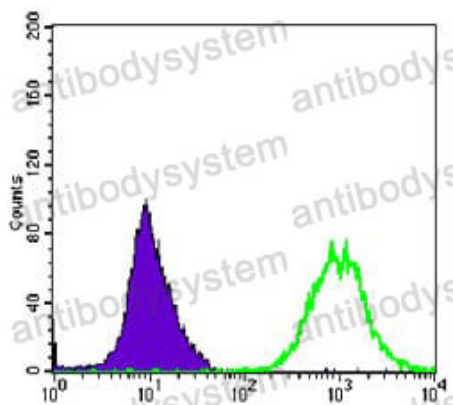
Lane 3: mouse colon

Second Ab: Goat Anti-Mouse IgG H&L Polyclonal antibody, HRP (PMB96431) at 0.1 µg/mL.

Predict MW: 42 kDa

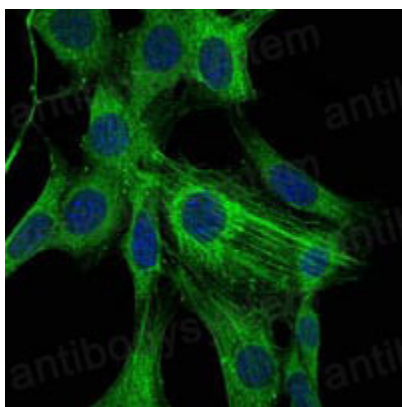
Observed MW: 42 kDa

1X10⁶ C2C12 cells were intracellularly stained with 0.4 µg Anti-Human smooth muscle actin specific (RHF52709) and CoraLite®488-Conjugated AffiniPure Goat Anti-Mouse IgG(H+L) at dilution 1:1000 (red), or 0.4 µg Control Antibody. Cells were fixed with 4% PFA and permeabilized with Flow Cytometry Perm Buffer.



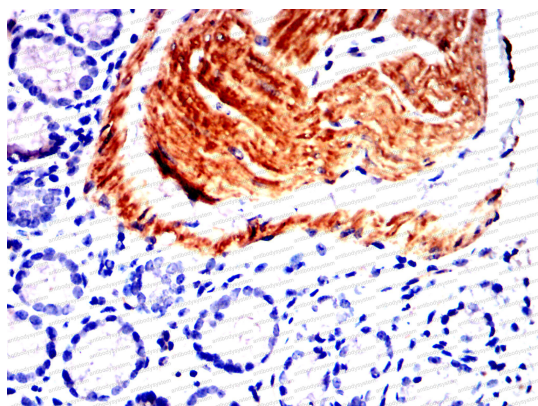
Flow Cytometry

Flow cytometric analysis of Hela cells using ACTA2 mouse mAb (green) and negative control (purple).



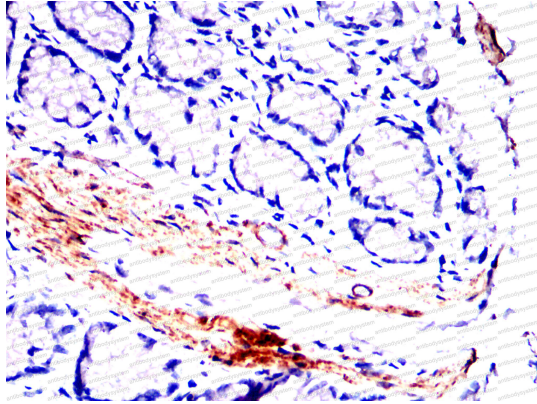
Immunofluorescence

Immunofluorescence analysis of NIH/3T3 cells using ACTA2 mouse mAb (green). Blue: DRAQ5 fluorescent DNA dye.



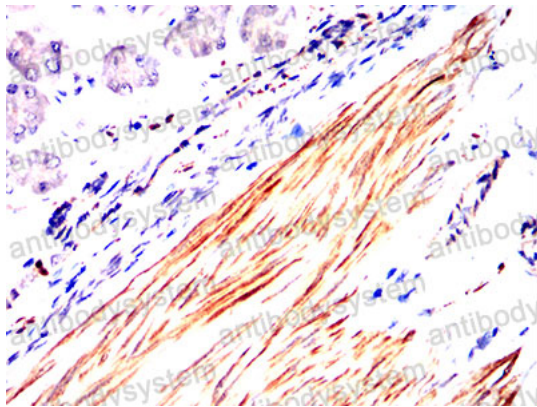
Immunohistochemical

Immunohistochemical analysis of paraffin-embedded Mouse colon using ACTA2 mouse mAb with DAB staining.



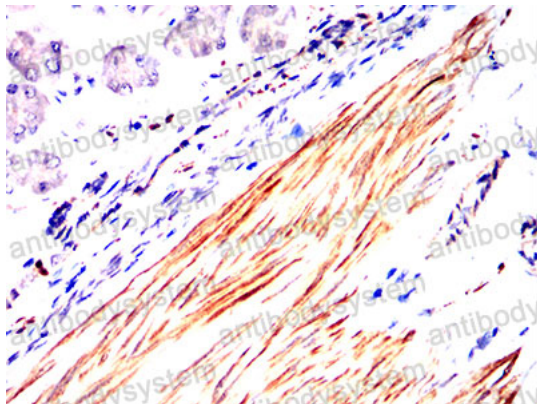
Immunohistochemical

Immunohistochemical analysis of paraffin-embedded Rat colon using ACTA2 mouse mAb with DAB staining.



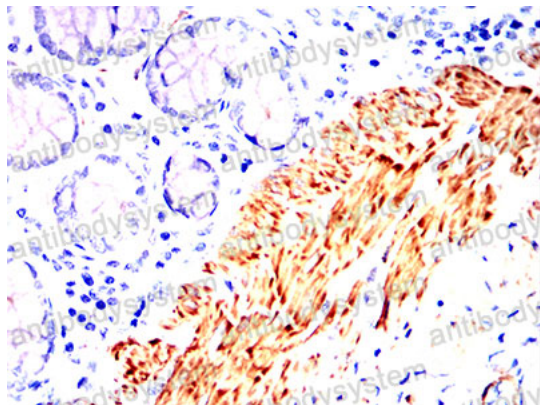
Immunohistochemical

Immunohistochemical analysis of paraffin-embedded Rabbit stomach using ACTA2 mouse mAb with DAB staining.



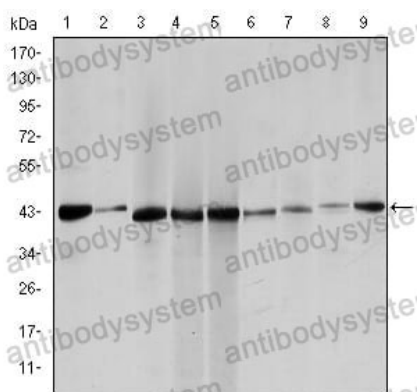
Immunohistochemical

Immunohistochemical analysis of paraffin-embedded Rabbit stomach using ACTA2 mouse mAb with DAB staining.



Immunohistochemical

Immunohistochemical analysis of paraffin-embedded Rabbit rectum using ACTA2 mouse mAb with DAB staining.



Western blot

Western blot analysis using ACTA2 mouse mAb against Hela (1), Jurkta (2), HepG2 (3), MCF-7 (4), A431 (5), A549 (6), PC-12 (7), NIH/3T3 (8) and Cos7 (9) cell lysate.