

Anti-EPHB1 Antibody (R3N30)

Summary

Catalog No.	RHF05202
Clone ID	R3N30
Host species	Mouse
Tested applications	IHC: 1:200-1:1000, WB: 1:500-1:2000
Species reactivity	Human
Form	Liquid
Storage buffer	0.01M PBS, pH 7.4, 0.05% Sodium Azide.
Concentration	1 mg/ml
Purity	>95% as determined by SDS-PAGE.
Clonality	Monoclonal
Isotype	IgG1
Applications	IHC, WB
Target	NET, Ephrin type-B receptor 1, Tyrosine-protein kinase receptor EPH-2, Neuronally-expressed EPH-related tyrosine kinase, hEK6, HEK6, EPHB1, EPH-like kinase 6, EK6, EPH tyrosine kinase 2, EPHT2, ELK
Purification	Protein A/G purified from cell culture supernatant.
Endotoxin level	Please contact with the lab for this information.
Accession	P54762

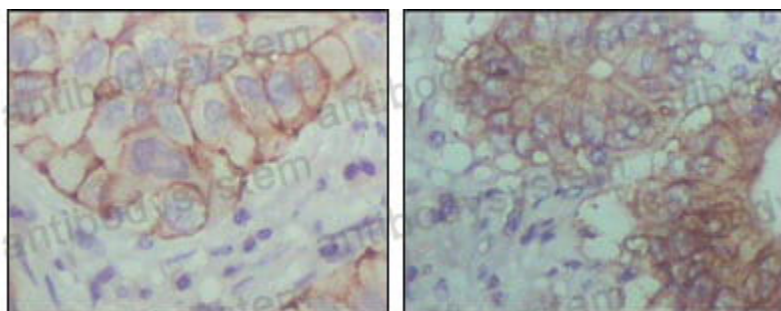
Stability and Storage

Use a manual defrost freezer and avoid repeated freeze-thaw cycles.

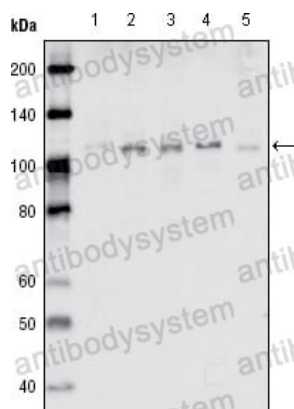
Store at 4°C short term (1-2 weeks). Store at -20°C 12 months. Store at -80°C long term.

Note

For research use only.

Data Image

Immunohistochemical analysis of paraffin-embedded human lung cancer (left) and colon cancer (right) showing cytoplasmic localization with DAB staining using EphB1 mouse mAb.

Immunohistochemical**Western blot**

Western blot analysis using EphB1 mouse mAb against MDA-MB-468 (1), MDA-MB-453 (2), MCF-7 (3), T47D (4) and SKBR-3 (5) cell lysate.