

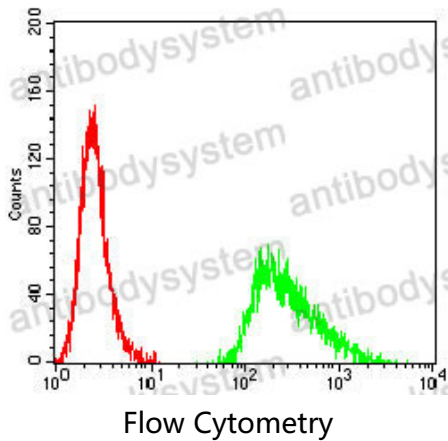
# Anti-GPC3/Glypican 3 Antibody (R3M60)

## Summary

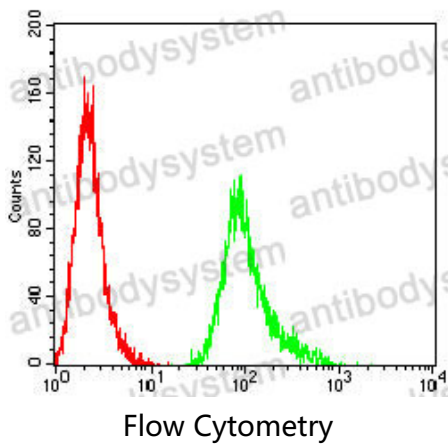
---

<b>Catalog No.</b>	RHE84609
<b>Clone ID</b>	R3M60
<b>Host species</b>	Mouse
<b>Tested applications</b>	ELISA: 1:10000, FCM: 1:200-1:400, IHC: 1:200-1:1000, WB: 1:500-1:2000
<b>Species reactivity</b>	Human
<b>Form</b>	Liquid
<b>Storage buffer</b>	0.01M PBS, pH 7.4, 0.05% Sodium Azide.
<b>Concentration</b>	1 mg/ml
<b>Purity</b>	>95% as determined by SDS-PAGE.
<b>Clonality</b>	Monoclonal
<b>Isotype</b>	IgG1
<b>Applications</b>	ELISA, FCM, IHC, WB
<b>Target</b>	GPC3, MXR7, GTR2-2, Glypican-3, Intestinal protein OCI-5, OCI5
<b>Purification</b>	Protein A/G purified from cell culture supernatant.
<b>Endotoxin level</b>	Please contact with the lab for this information.
<b>Accession</b>	P51654
<b>Stability and Storage</b>	Use a manual defrost freezer and avoid repeated freeze-thaw cycles. Store at 4°C short term (1-2 weeks). Store at -20°C 12 months. Store at -80°C long term.
<b>Note</b>	For research use only.

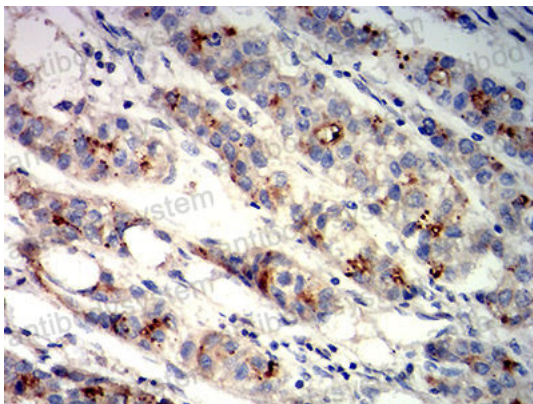
## Data Image



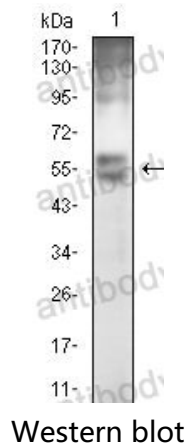
Flow cytometric analysis of HeLa cells using GPC3 mouse mAb (green) and negative control (red).



Flow cytometric analysis of HepG2 cells using GPC3 mouse mAb (green) and negative control (red).



Immunohistochemical analysis of paraffin-embedded human liver cancer tissues using GPC3 mouse mAb with DAB staining.



Western blot analysis using GPC3 mouse mAb against HEK293 (1) cell lysate.