

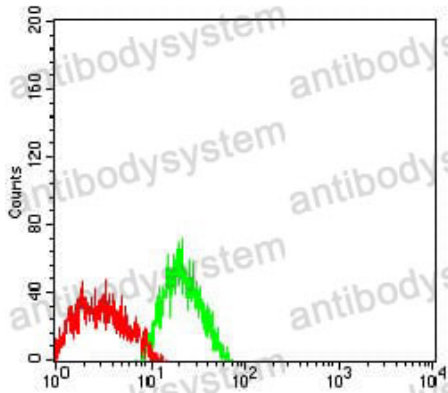
# Anti-GPC3/Glypican 3 Antibody (R3M58)

## Summary

---

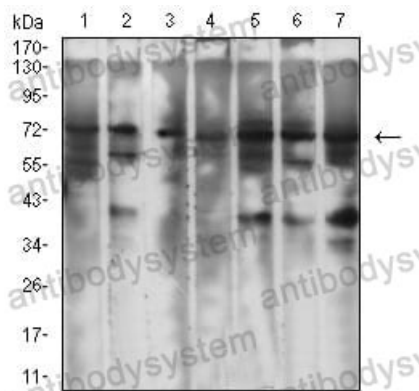
<b>Catalog No.</b>	RHE84607
<b>Clone ID</b>	R3M58
<b>Host species</b>	Mouse
<b>Tested applications</b>	ELISA: 1:10000, FCM: 1:200-1:400, WB: 1:500-1:2000
<b>Species reactivity</b>	Human, Rat
<b>Form</b>	Liquid
<b>Storage buffer</b>	0.01M PBS, pH 7.4, 0.05% Sodium Azide.
<b>Concentration</b>	1 mg/ml
<b>Purity</b>	>95% as determined by SDS-PAGE.
<b>Clonality</b>	Monoclonal
<b>Isotype</b>	IgG1
<b>Applications</b>	ELISA, FCM, WB
<b>Target</b>	GPC3, MXR7, GTR2-2, Glypican-3, Intestinal protein OCI-5, OCI5
<b>Purification</b>	Protein A/G purified from cell culture supernatant.
<b>Endotoxin level</b>	Please contact with the lab for this information.
<b>Accession</b>	P51654
<b>Stability and Storage</b>	Use a manual defrost freezer and avoid repeated freeze-thaw cycles. Store at 4°C short term (1-2 weeks). Store at -20°C 12 months. Store at -80°C long term.
<b>Note</b>	For research use only.

## Data Image



Flow Cytometry

Flow cytometric analysis of SK-N-SH cells using GPC3 mouse mAb (green) and negative control (red).



Western blot

Western blot analysis using GPC3 mouse mAb against SW480 (1), HCT116 (2), SH-SY5Y (3), HepG2 (4), PC-12 (5), HEK293 (6), and Hela (7) cell lysate.